



**Price**

**£280,000**

**Share of  
Freehold**

2x  1x  1x 

**Whyteacre, Court**

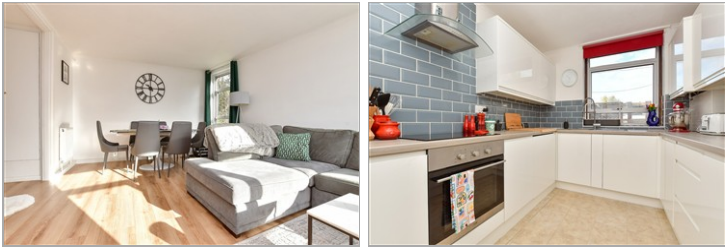
**Bushes Road,**

**Whyteleafe, Surrey, CR3**

**OVER 60?**

Secure this property  
for up to **59% less!**

**cubitt&west**  
Helping you move forwards



## Main features

- Large two bedroom top floor apartment
- Built in wardrobes to bedroom one and storage cupboard in the block
- Double aspect lounge/diner and large windows throughout
- Walking distance to three mainline stations
- Garage en-bloc and off road parking

## Accommodation

### TOP FLOOR

Entrance Hall

Lounge/Diner : 17'8 x 16'2 (5.39m x 4.93m)

Kitchen : 10'7 x 8'2 (3.23m x 2.49m)

Bedroom 1 : 11'1 x 10'6 (3.38m x 3.20m)

Bedroom 2: 10'10 x 10'6 (3.30m x 3.20m)

Bathroom

### OUTSIDE

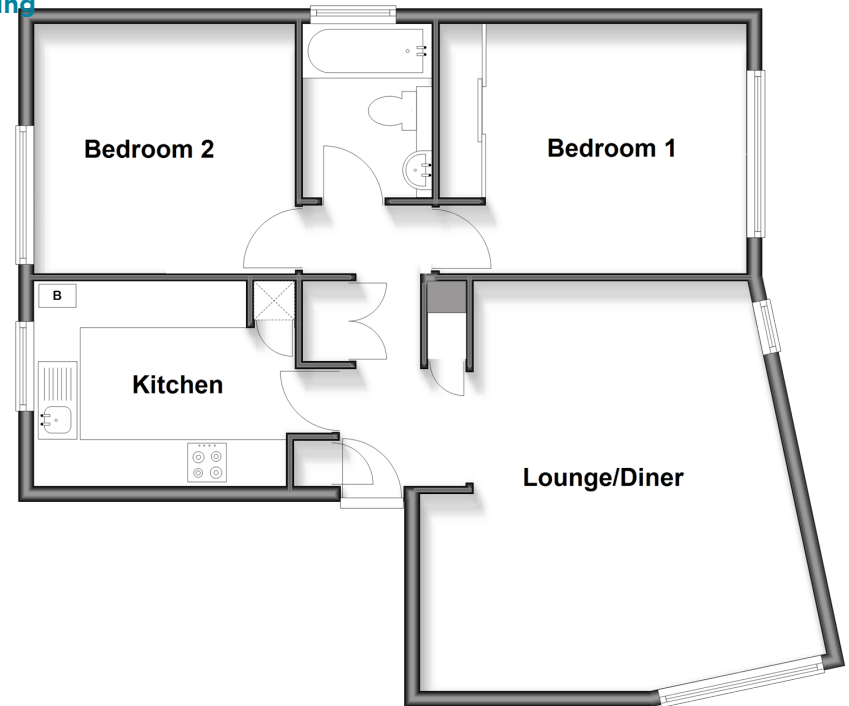
Garage en-bloc

Off street parking

Communal Gardens

### Top Floor

Approx. 67.9 sq. metres (731.4 sq. feet)



**Call Caterham - 01883 331000 ■ [cubittandwest.co.uk](http://cubittandwest.co.uk)**

- Legal advice should be taken to verify fixtures/fittings, planning, alterations and/or lease details
- Appliances & services are untested, dimensions are approximate and floor plans are not to scale
- Through a Homewise Home For Life Plan people aged 60+ can secure this property for up to 50% less, by purchasing a Lifetime Lease.



24408293/20251108/JE/LP