



Guide Price
£260,000

Leasehold

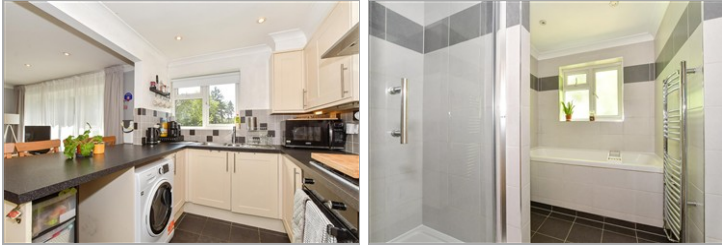
2x  1x  1x 

**Gladeside Court,
Succombs Hill,
Warlingham, Surrey,
CR6**

OVER 60?

Secure this property
for up to **59% less!**

cubitt&west
Helping you move forwards



Main features

- Two bedroom top floor flat
- Open plan kitchen/living space with breakfast bar
- Off street parking & garage en-bloc
- Large bathroom with separate shower cubicle
- Walking distance to Whyteleafe South Station and Warlingham Green

Accommodation

SECOND FLOOR

Entrance Hallway

Lounge: 13'0 x 12'0 (3.97m x 3.66m)

Kitchen: 10'0 x 10'0 (3.05m x 3.05m)

Bedroom 1: 13'10 x 10'0 (4.22m x 3.05m)

Bedroom 2: 10'0 x 7'11 (3.05m x 2.41m)

Bathroom : 9'0 x 6'0 (2.75m x 1.83m)

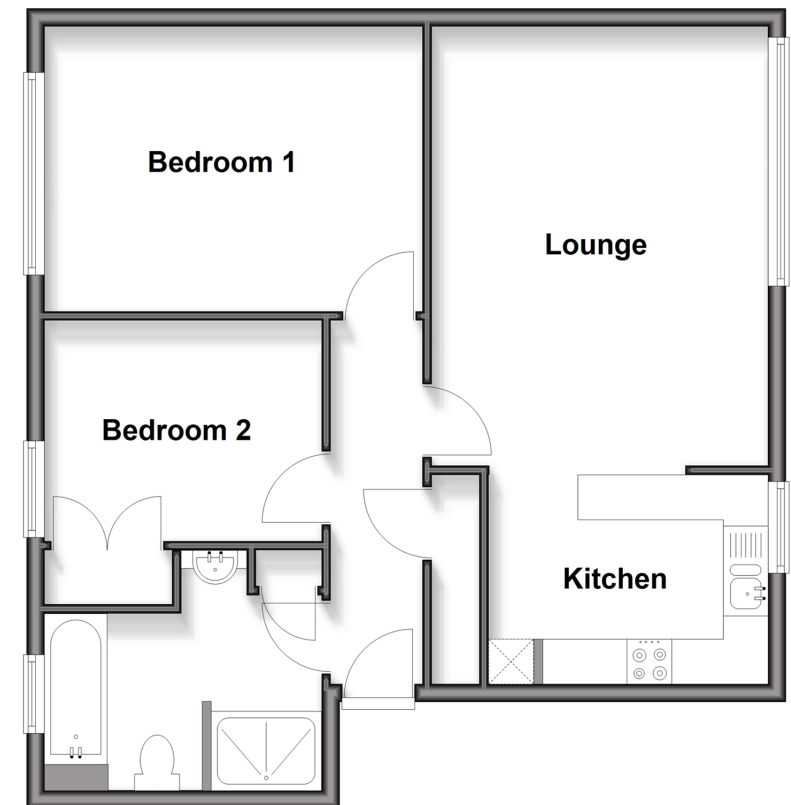
OUTSIDE

Garage En-Bloc

Residents off street parking

Second Floor

Approx. 62.7 sq. metres (675.2 sq. feet)



Call Caterham - 01883 331000 ■ cubittandwest.co.uk

- Legal advice should be taken to verify fixtures/fittings, planning, alterations and/or lease details
- Appliances & services are untested, dimensions are approximate and floor plans are not to scale
- Through a Homewise Home For Life Plan people aged 60+ can secure this property for up to 50% less, by purchasing a Lifetime Lease.



24408242/20251016/LP/LP