



OVER 60?

Secure this property
for up to **59% less!**

Guide Price
£300,000

Leasehold

2x  1x  1x 

**Farningham Road,
Caterham, Surrey, CR3**

cubitt & west
Helping you move forwards



Main features

- Split level maisonette offering plenty of space
- Allocated parking space to the rear for ease
- Cloakroom to bedroom one
- Short walk to Caterham station and local shops
- Patio to the front of the house

Accommodation

GROUND FLOOR

Entrance Hallway

Lounge: 12'8 x 10'0 (3.86m x 3.05m)

Kitchen: 10'1 x 8'6 (3.08m x 2.59m)

Bathroom: 9'9 x 5'4 (2.97m x 1.63m)

FIRST FLOOR

Landing

Bedroom 1: 13'3 x 12'6 (4.04m x 3.81m)

Cloakroom

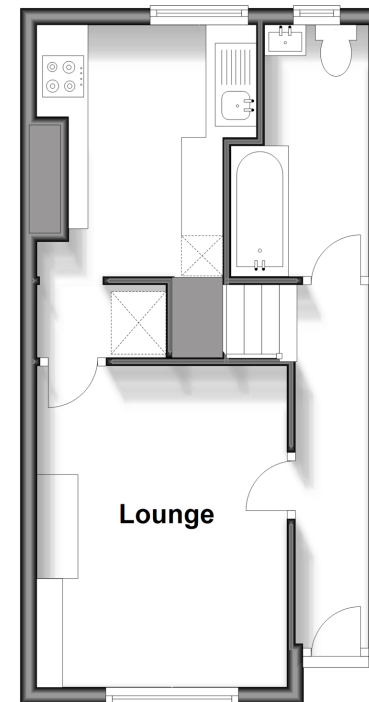
Bedroom 2: 12'4 x 10'3 (3.76m x 3.13m)

OUTSIDE

Allocated Parking Space

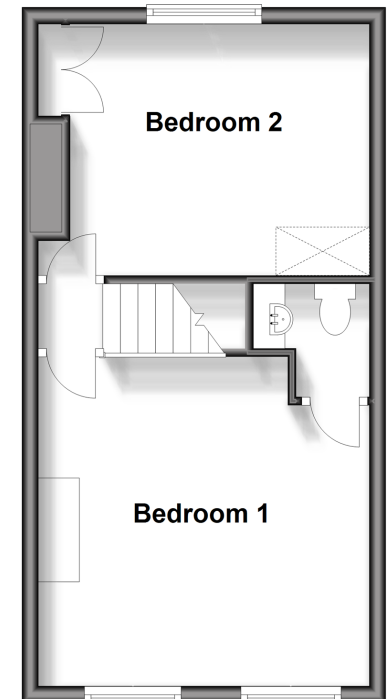
Ground Floor

Approx. 31.6 sq. metres (340.5 sq. feet)



First Floor

Approx. 32.2 sq. metres (346.1 sq. feet)



Call Caterham - 01883 331000 ■ cubittandwest.co.uk

- Legal advice should be taken to verify fixtures/fittings, planning, alterations and/or lease details
- Appliances & services are untested, dimensions are approximate and floor plans are not to scale
- Through a Homewise Home For Life Plan people aged 60+ can secure this property for up to 50% less, by purchasing a Lifetime Lease.



21500495/20250915/LP/LP