



Guide Price
£290,000

**Share of
Freehold**

2x  1x  1x 

**Crescent Road,
Caterham, Surrey, CR3**

OVER 60?

Secure this property
for up to **59% less!**

cubitt & west
Helping you move forwards



Main features

- Spacious ground floor maisonette
- Bright and airy living spaces throughout
- Walking distance to local shops and mainline station
- Private driveway with off-street parking for two cars
- Chain Free

Accommodation

GROUND FLOOR

Entrance hallway

Kitchen: 10'0 x 9'0 (3.05m x 2.75m)

Lounge/Diner: 15'11 x 11'11 (4.85m x 3.63m)

Bathroom: 7'0 x 6'0 (2.14m x 1.83m)

Bedroom 1: 14'0 x 10'10 (4.27m x 3.30m)

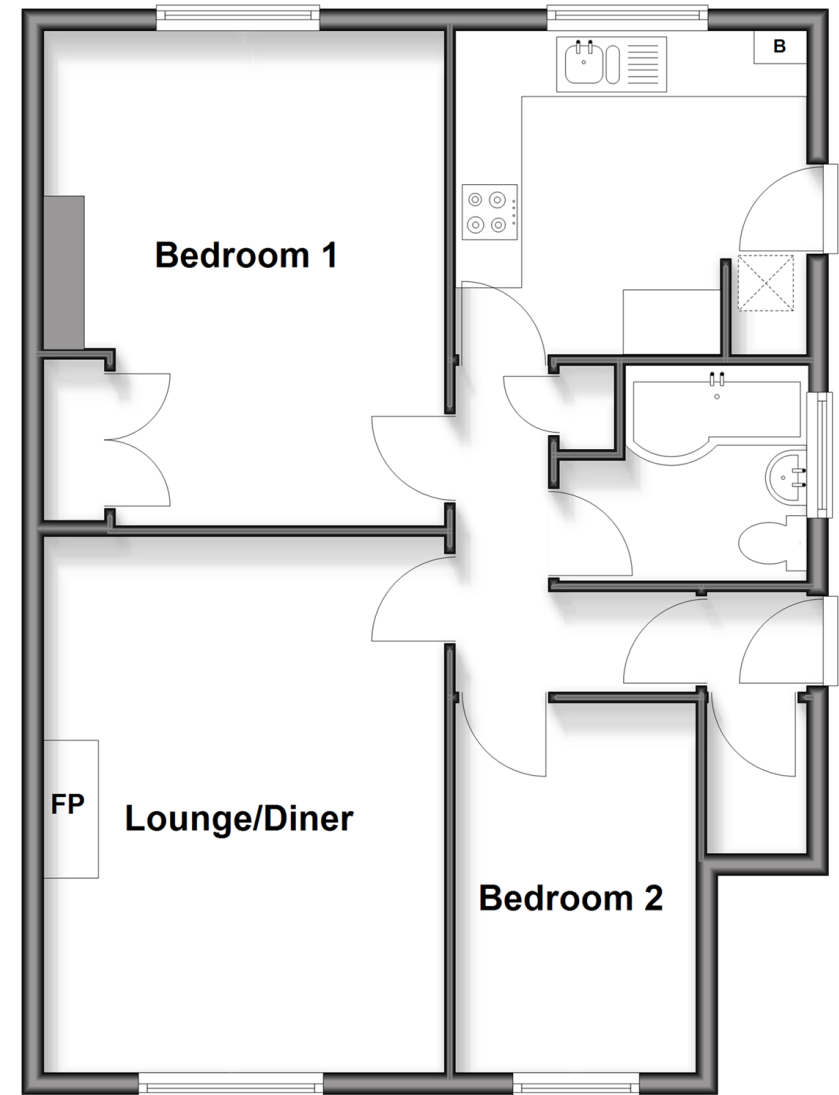
Bedroom 2: 10'11 x 7'0 (3.33m x 2.14m)

OUTSIDE

Driveway

Ground Floor

Approx. 63.6 sq. metres (685.0 sq. feet)



Call Caterham - 01883 331000 ■ cubittandwest.co.uk

- Legal advice should be taken to verify fixtures/fittings, planning, alterations and/or lease details
- Appliances & services are untested, dimensions are approximate and floor plans are not to scale
- Through a Homewise Home For Life Plan people aged 60+ can secure this property for up to 50% less, by purchasing a Lifetime Lease.



24408185/20251112/KH/AFO