



**Price**  
**£495,000**

**Freehold**

2x  1x  1x 

**Auckland Road,  
Caterham, Surrey, CR3**

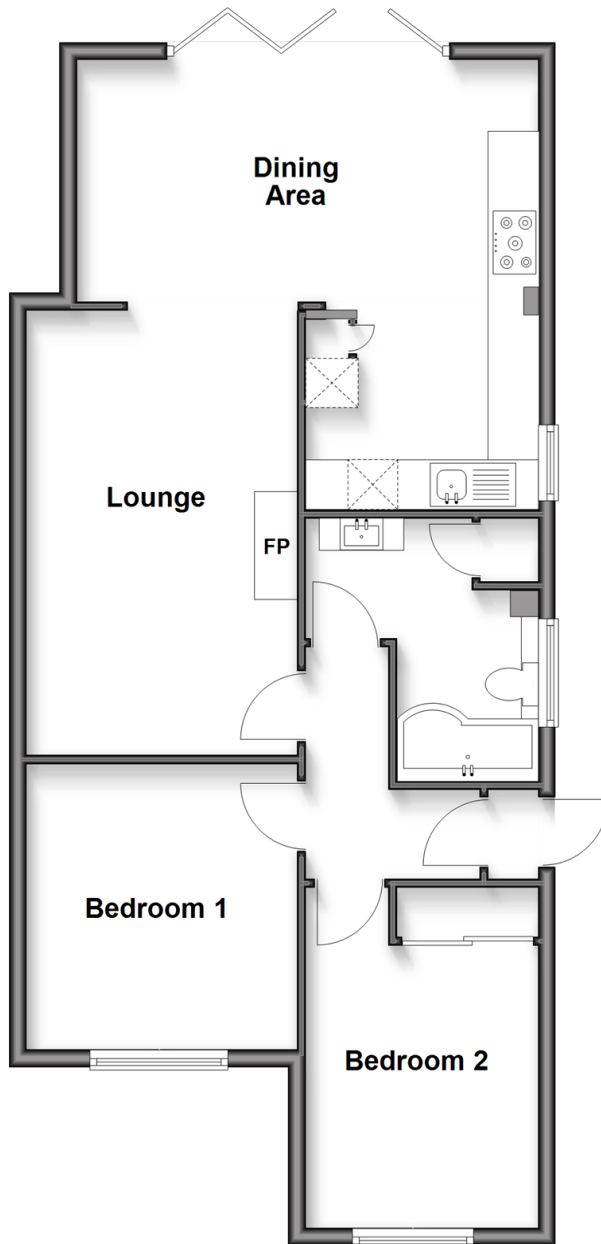
**OVER 60?**

Secure this property  
for up to **59% less!**

**cubitt&west**  
Helping you move forwards

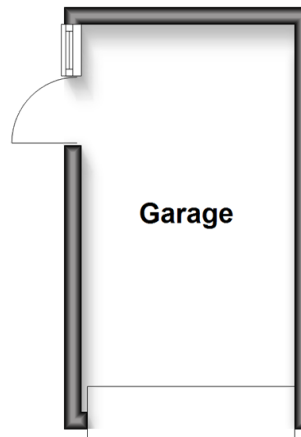
## Ground Floor

Approx. 72.6 sq. metres (781.5 sq. feet)



## Outbuilding

Approx. 11.2 sq. metres (120.8 sq. feet)



## Accommodation

### GROUND FLOOR

Porch

Entrance hallway

Bedroom 1: 10'9 x 9'0 (3.28m x 2.75m)

Bedroom 2: 10'8 x 10'2 (3.25m x 3.10m)

Bathroom: 10'0 x 5'5 (3.05m x 1.65m)

Lounge: 17'0 x 10'4 (5.19m x 3.15m)

Kitchen/Dining Area: 17'7 x 17'4 (5.36m x 5.29m)

### OUTBUILDING

Garage: 14'9 x 8'2 (4.50m x 2.49m)

### OUTSIDE

Driveway

Front Garden

Rear Garden



## Main features

- Extended semi-detached bungalow
- Low maintenance rear garden with green house
- Detached single garage and drive for multiple cars
- Bi-fold doors leading from the kitchen diner to the garden
- Built in wardrobes to bedroom one



### Nearest Schools

Primary Schools: Hillcroft Primary 0.7 miles, Audley Primary 0.7 miles, St Francis Catholic Primary 0.7 miles

Secondary Schools: de Stafford School 0.5 miles, Sunnydown School 0.7 miles, Clifton Hill School 0.8 miles



### Transport Information

Train Stations: Caterham 1.2 miles, Woldingham 1.6 miles, Whyteleafe 1.8 miles, Whyteleafe South 1.8 miles



### Address

Auckland Road, Caterham, Surrey, CR3



### Directions

For directions to this property please contact us.



**cubitt&west**  
Helping you move forwards

Call Caterham Branch 01883 331000 ■ [cubittandwest.co.uk](https://cubittandwest.co.uk)



- Legal advice should be taken to verify fixtures/fittings, planning, alterations and/or lease details
- Through a Homewise Home For Life Plan people aged 60+ can secure this property for up to 59% less, by purchasing a Lifetime Lease.
- Appliances & services are untested, dimensions are approximate and floor plans are not to scale



24408128/20250521/JE/LP