



Price

£260,000

Leasehold

2x  1x  1x 

**Shaw Court, Ninehams
Road, Caterham, Surrey,
CR3**

OVER 60?

Secure this property
for up to **59% less!**

cubitt&west
Helping you move forwards



Main features

- Ground floor apartment
- Off street parking & garage en-bloc
- Large living area with separate kitchen
- Communal gardens
- Walking distance to Coulsdon Common & Kenley Areodrome

Accommodation

GROUND FLOOR

Entrance Hallway

Lounge/Dining room: 14'0 x 13'0 (4.27m x 3.97m)

Kitchen: 10'0 x 7'3 (3.05m x 2.21m)

Bedroom 1: 19'0 x 15'0 (5.80m x 4.58m)

Bedroom 2: 14'0 x 8'0 (4.27m x 2.44m)

Bathroom: 10'0 x 7'6 (3.05m x 2.29m)

OUTBUILDINGS

Garage

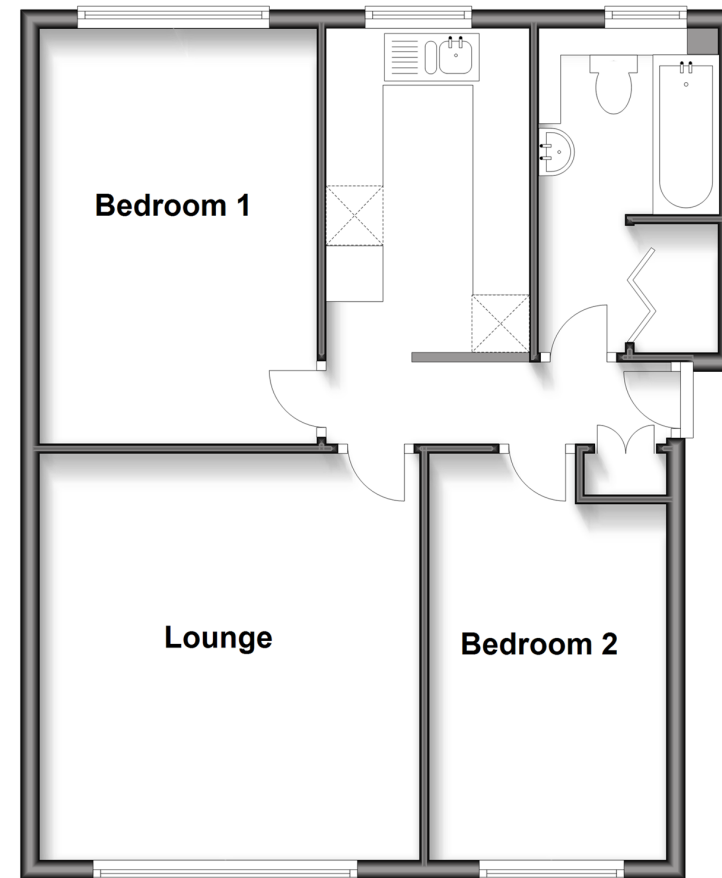
OUTSIDE

Off Street Parking

Communal Gardens

Ground Floor

Approx. 643.8 sq. feet



Call Caterham - 01883 331000 ■ cubittandwest.co.uk

- Legal advice should be taken to verify fixtures/fittings, planning, alterations and/or lease details
- Appliances & services are untested, dimensions are approximate and floor plans are not to scale
- Through a Homewise Home For Life Plan people aged 60+ can secure this property for up to 59% less, by purchasing a Lifetime Lease.



24407909/20250617/ZK/LP