



**Price**  
**£315,000**

**Leasehold**

2x  1x  1x 

**Coulsdon Road,  
Caterham, Surrey, CR3**

**OVER 60?**

Secure this property  
for up to **59% less!**

**cubitt&west**  
Helping you move forwards





## Main features

- Chain free ground floor maisonette
- Driveway for two cars and allocated parking to the rear
- Private rear garden leading out from the kitchen
- Built in wardrobes to bedroom one
- Walking distance to local shops and bus stops

## Accommodation

### GROUND FLOOR

Entrance Hallway

Lounge: 13'2 x 10'10 (4.02m x 3.30m)

Kitchen: 10'6 x 5'11 (3.20m x 1.80m)

Bedroom 1: 13'11 x 10'9 into fitted wardrobes (4.24m x 3.28m)

Bedroom 2: 9'5 x 8'8 (2.87m x 2.64m)

Bathroom: 9'4 x 5'2 (2.85m x 1.58m)

### OUTSIDE

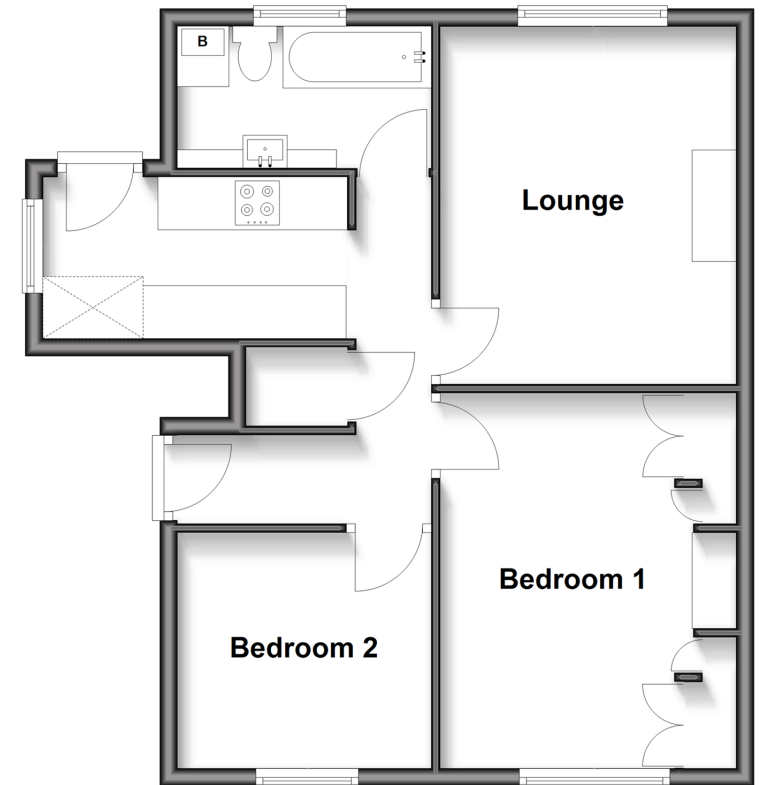
Driveway for 2 cars

Private rear parking

Rear Garden

## Ground Floor

Approx. 55.0 sq. metres (592.5 sq. feet)



**Call Caterham - 01883 331000 ■ [cubittandwest.co.uk](http://cubittandwest.co.uk)**

- Legal advice should be taken to verify fixtures/fittings, planning, alterations and/or lease details
- Appliances & services are untested, dimensions are approximate and floor plans are not to scale
- Through a Homewise Home For Life Plan people aged 60+ can secure this property for up to 59% less, by purchasing a Lifetime Lease.



24407635/20250403/JE/LP