



**Price**

**£430,000**

**Leasehold**

2x  1x  1x 

**Plot 9, Queens Park  
Road, Caterham, Surrey,  
CR3**

**cubitt&west**  
Helping you move forwards



## Main features

- Bespoke kitchens with Quartz worktops
- Water underfloor heating throughout with individual thermostats
- 10-year build warranty
- Secure allocated parking space

## Accommodation

### SECOND FLOOR

Entrance Hallway

Kitchen/Dining/Living area: 23'3 x 13'0 (7.09m x 3.97m)

Bedroom 1: 17'4 x 12'7 (5.29m x 3.84m)

En Suite Shower

Bedroom 2: 12'8 x 9'1 (3.86m x 2.77m)

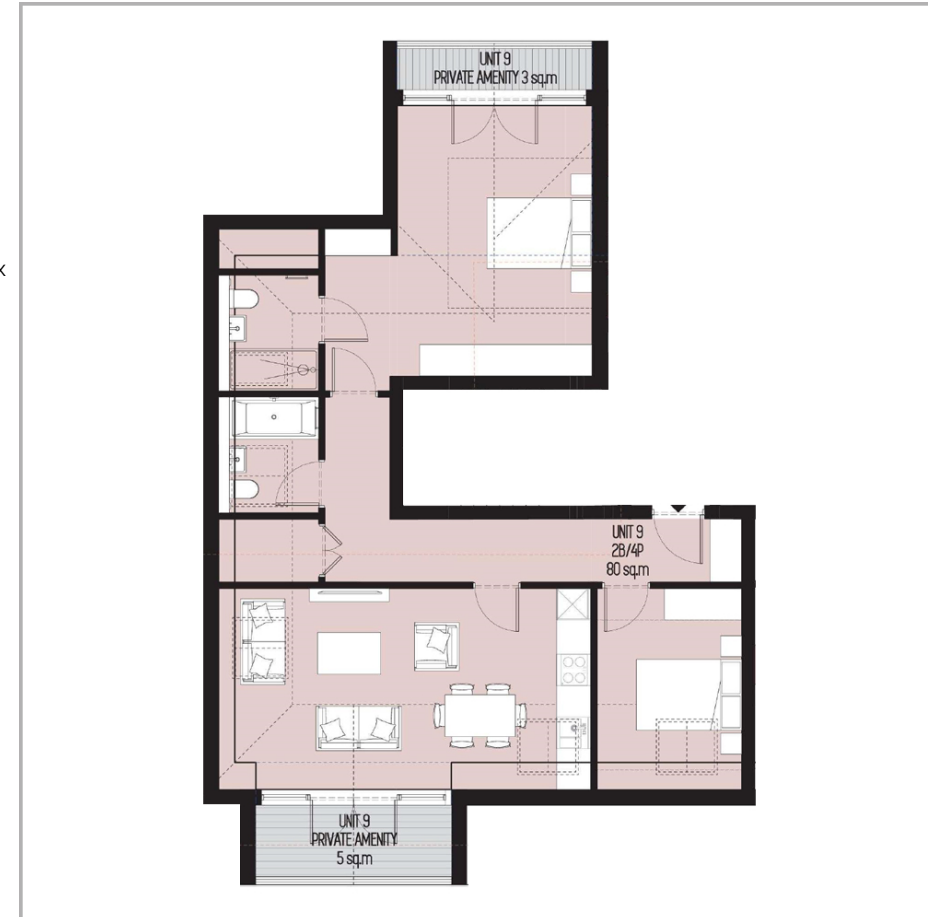
Bathroom

### OUTSIDE

Balcony

Communal Garden

Allocated Parking Space



**Call Caterham - 01883 331000 ■ [cubittandwest.co.uk](http://cubittandwest.co.uk)**

- Legal advice should be taken to verify fixtures/fittings, planning, alterations and/or lease details
- Appliances & services are untested, dimensions are approximate and floor plans are not to scale



24408045/20250214/JE/LP