



Price
£250,000

**Share of
Freehold**

2x  1x  1x 

**Hillside Road,
Whyteleafe, Surrey, CR3**

OVER 60?

Secure this property
for up to **59% less!**

cubitt&west
Helping you move forwards



Main features

- Bright and spacious second floor flat
- Private loft space for storage
- Both bedrooms are generously sized doubles
- Garage en-bloc and chain free
- Walking distance to Whyteleafe South station

Accommodation

SECOND FLOOR

Entrance Hallway

Kitchen: 12'3 x 7'8 (3.74m x 2.34m)

Lounge/Dining Room: 17'5 x 11'1 (5.31m x 3.38m)

Bedroom 1: 11'3 x 10'4 (3.43m x 3.15m)

Bedroom 2: 11'5 x 10'3 (3.48m x 3.13m)

Bathroom

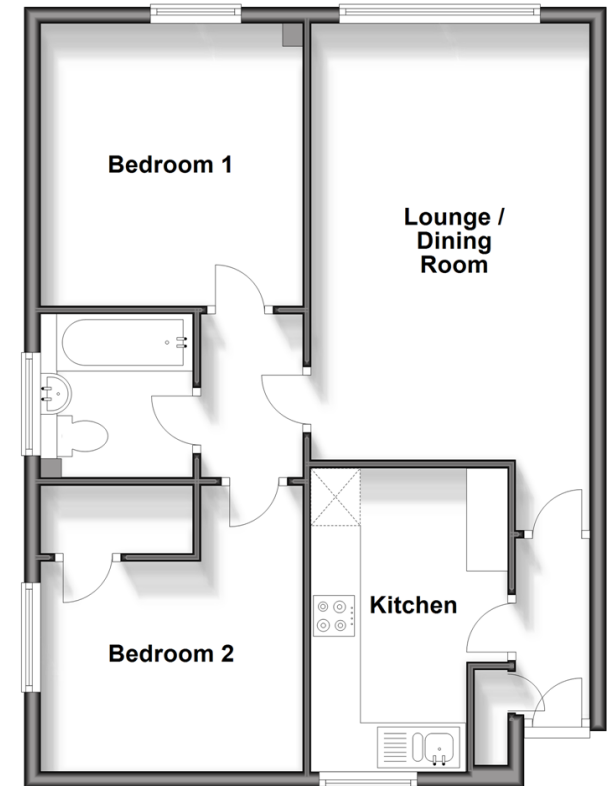
OUTSIDE

Communal Gardens

Garage En-Bloc

Second Floor

Approx. 60.6 sq. metres (651.9 sq. feet)



Call Caterham - 01883 331000 ■ cubittandwest.co.uk

- Legal advice should be taken to verify fixtures/fittings, planning, alterations and/or lease details
- Appliances & services are untested, dimensions are approximate and floor plans are not to scale
- Through a Homewise Home For Life Plan people aged 60+ can secure this property for up to 50% less, by purchasing a Lifetime Lease.



24408031/20250920/JE/LP