



OVER 60?

Secure this property
for up to **59% less!**

Price

£300,000

Leasehold

2x  1x  1x 

**Russett Court, Tupwood
Lane, Caterham, Surrey,
CR3**

cubitt&west
Helping you move forwards



Main features

- Fully refurbished by the current owner
- Fitted wardrobes to bedroom one
- Wonderful views towards Woldingham
- Off street parking & garage en-bloc
- Walking distance to Caterham station & local shops

Accommodation

SECOND FLOOR

Entrance Hall

Lounge: 14'8 x 13'0 (4.47m x 3.97m)

Kitchen: 11'0 x 8'0 (3.36m x 2.44m)

Bedroom 1: 14'8 x 9'8 (4.47m x 2.95m)

Bedroom 2: 12'5 x 9'3 (3.79m x 2.82m)

Bathroom

OUTSIDE

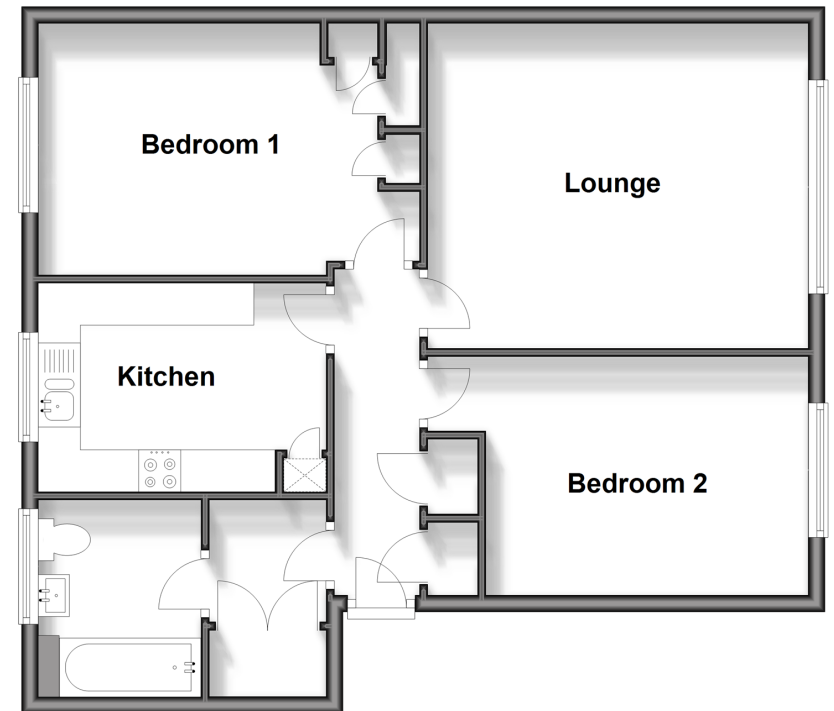
Off Street Parking

Garage En-bloc

Communal Garden

Second Floor

Approx. 66.8 sq. metres (718.6 sq. feet)



Call Caterham - 01883 331000 ■ cubittandwest.co.uk

- Legal advice should be taken to verify fixtures/fittings, planning, alterations and/or lease details
- Appliances & services are untested, dimensions are approximate and floor plans are not to scale
- Through a Homewise Home For Life Plan people aged 60+ can secure this property for up to 59% less, by purchasing a Lifetime Lease.



24408000/20241109/JE/LP