



OVER 60?

Secure this property
for up to **59% less!**

Price

£575,000

Freehold

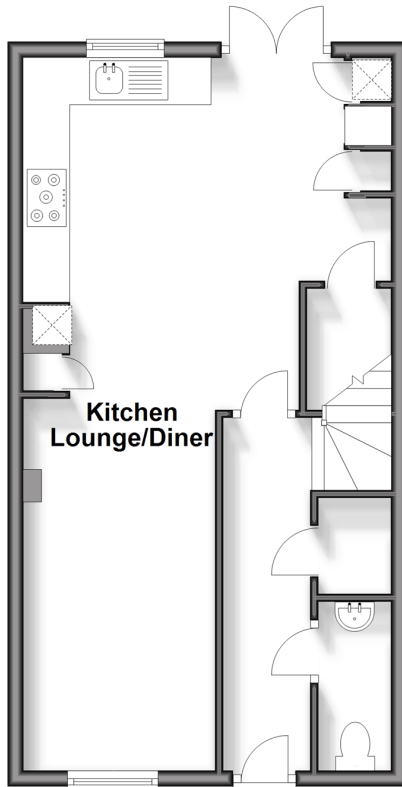
3x  2x  2x 

**Stirling Drive, Caterham,
Surrey, CR3**

cubitt&west
Helping you move forwards

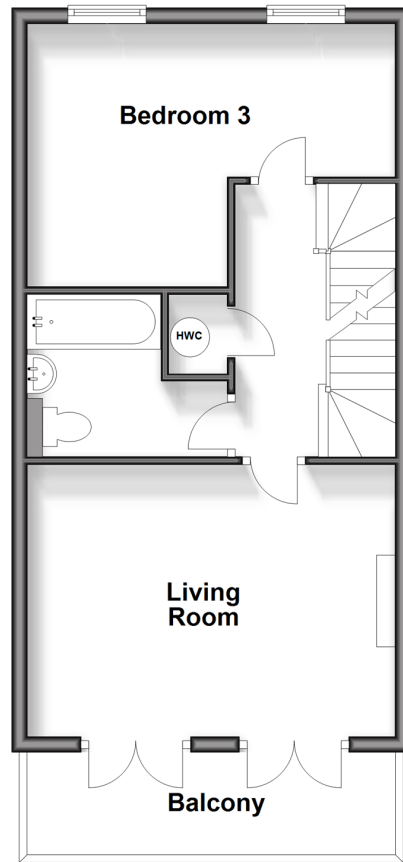
Ground Floor

Approx. 42.8 sq. metres (460.5 sq. feet)



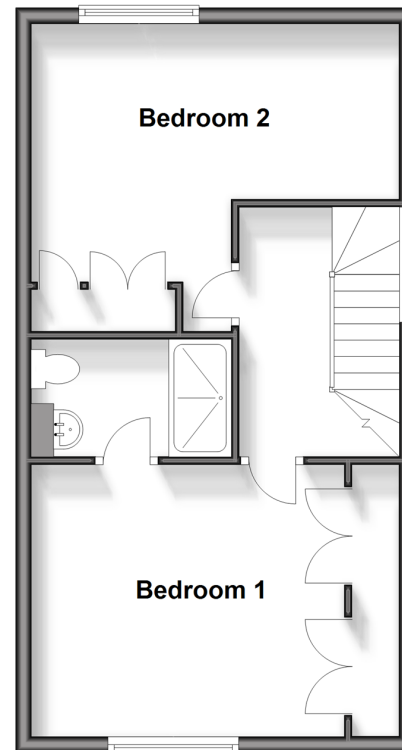
First Floor

Approx. 42.9 sq. metres (461.7 sq. feet)



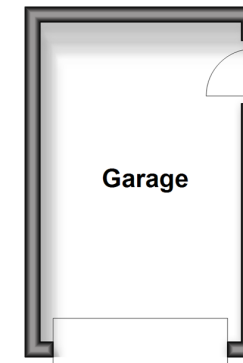
Second Floor

Approx. 42.8 sq. metres (460.5 sq. feet)



Outbuilding

Approx. 10.4 sq. metres (112.4 sq. feet)



Accommodation

GROUND FLOOR

Entrance Hallway
Kitchen: 15'0 x 13'5 (4.58m x 4.09m)
Lounge/Diner: 15'9 x 8'1 (4.80m x 2.47m)
Cloakroom

FIRST FLOOR

Landing
Living Room: 15'0 x 8'0 (4.58m x 2.44m)
Bedroom 3: 13'0 x 11'0 (3.97m x 3.36m)
Bathroom

SECOND FLOOR

Bedroom 1: 15'0 x 10'1 (4.58m x 3.08m)
Bedroom 2: 13'6 x 13'0 (4.12m x 3.97m)
Bathroom

OUTSIDE

Front Garden
Rear garden
Driveway
Garage



Main features

- Two bathrooms including an en-suite
- Open-plan kitchen/diner ideal for entertaining
- Driveway for one car and garage in block at the rear of the property
- Great location for walks to Coulsdon Common and Happy Valley
- Low maintenance rear garden



Nearest Schools

Primary Schools: Hillcroft Primary 0.7 miles, Keston Primary 0.8 miles, Audley Primary 0.8 miles

Secondary Schools: Coulsdon High School 0.5 miles, Oasis Academy - Coulsdon 0.5 miles, Clifton Hill School 0.7



Transport Information

Train Stations: Caterham 1.4 miles, Whyteleafe South 1.4 miles, Whyteleafe 1.5 miles



Address

Stirling Drive, Caterham, Surrey, CR3



Directions

For directions to this property please contact us.



cubitt&west
Helping you move forwards

Call Caterham Branch 01883 331000 ■ cubittandwest.co.uk



■ Legal advice should be taken to verify fixtures/fittings, planning, alterations and/or lease details ■ Appliances & services are untested, dimensions are approximate and floor plans are not to scale
■ Through a Homewise Home For Life Plan people aged 60+ can secure this property for up to 59% less, by purchasing a Lifetime Lease.



24407980/20250217/JE/TLA