



**Price**  
**£450,000**

**Freehold**

3x  1x  1x 

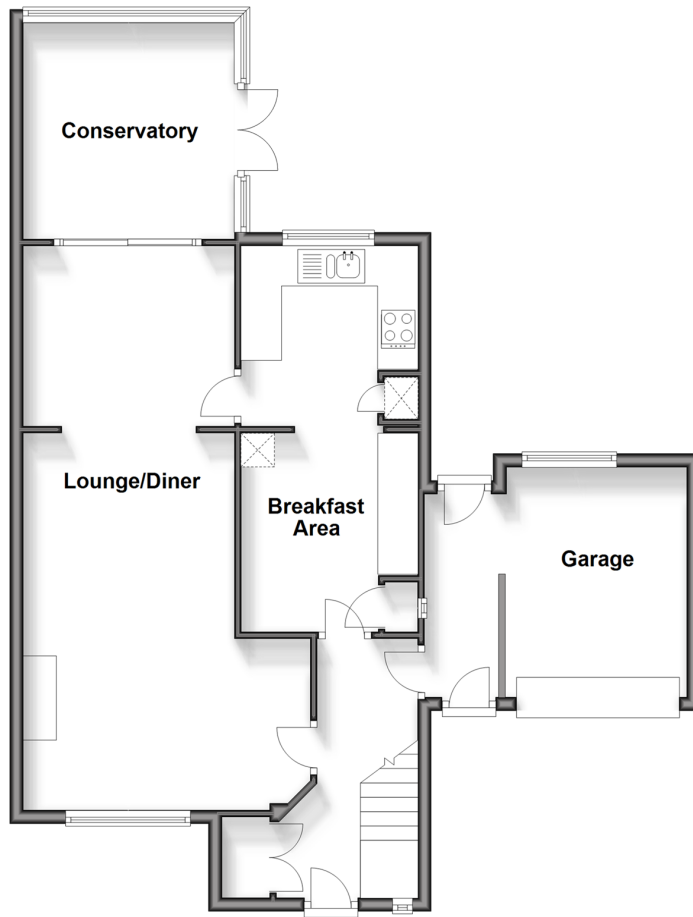
**Hunters Chase, South  
Godstone, Surrey, RH9**

**OVER 60?**

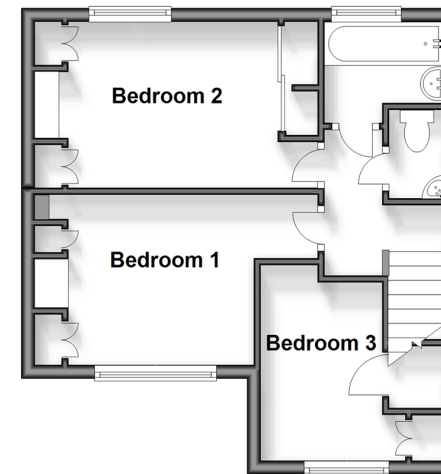
Secure this property  
for up to **59% less!**

**cubitt&west**  
Helping you move forwards

**Ground Floor**  
Approx. 76.9 sq. metres (827.6 sq. feet)



**First Floor**  
Approx. 35.1 sq. metres (377.9 sq. feet)



## Accommodation

### GROUND FLOOR

Entrance Hallway: 12'5 x 5'8 (3.79m x 1.73m)

Lounge/Diner: 30'0 x 11'6 (9.15m x 3.51m)

Conservatory: 10'8 x 10'0 (3.25m x 3.05m)

Kitchen/Breakfast Room: 19'4 x 9'7 (5.90m x 2.92m)

### FIRST FLOOR

Landing

Bedroom 1: 12'0 x 8'8 (3.66m x 2.64m)

Bedroom 2: 10'3 x 9'3 (3.13m x 2.82m)

Bedroom 3: 8'4 x 6'8 (2.54m x 2.03m)

Bathroom

Separate Toilet

### OUTSIDE

Front Garden

Rear Garden

Garage: 16'5 x 8'3 (5.01m x 2.52m)

Driveway





## Main features

- Huge potential to extend to both levels
- Driveway for two cars and garage
- Large garden with powered summer house
- Walking distance to Godstone Station and open spaces
- Chain free



### Nearest Schools

Primary Schools: St Stephen's CofE Primary 0.0 miles, Godstone Village School 2.1 miles  
Secondary Schools: Moor House School 2.4 miles, Oxted School 3.3 miles



### Transport Information

Train Stations: Godstone 0.2 miles, Hurst Green 3.0 miles, Oxted 3.0 miles



### Address

Hunters Chase, South Godstone, Surrey, RH9



### Directions

For directions to this property please contact us.





**cubitt&west**  
Helping you move forwards

Call Caterham Branch 01883 331000 ■ [cubittandwest.co.uk](https://cubittandwest.co.uk)



■ Legal advice should be taken to verify fixtures/fittings, planning, alterations and/or lease details ■ Appliances & services are untested, dimensions are approximate and floor plans are not to scale  
■ Through a Homewise Home For Life Plan people aged 60+ can secure this property for up to 59% less, by purchasing a Lifetime Lease.



24407981/20250407/AFO/LP