



Price
£390,000

**Share of
Freehold**

2x  2x  1x 

**West Hall Manor,
Westhall Road,
Warlingham, Surrey,
CR6**

OVER 60?

Secure this property
for up to **59% less!**

cubitt&west
Helping you move forwards



Main features

- Stunning apartment with two balconies and communal gardens
- Open plan living at its finest with breakfast bar and wine fridge
- Allocated parking and lift access
- Share of freehold
- Large storage cupboard and loft space

Accommodation

SECOND FLOOR

Entrance Hallway

Lounge/Diner/Kitchen: 18'7 x 17'1 (5.67m x 5.21m)

Bedroom 1: 12'9 x 12'5 (3.89m x 3.79m)

En Suite: 9'3 x 4'1 (2.82m x 1.25m)

Bedroom 2: 9'6 x 8'10 (2.90m x 2.69m)

Bathroom: 8'6 x 4'10 (2.59m x 1.47m)

OUTSIDE

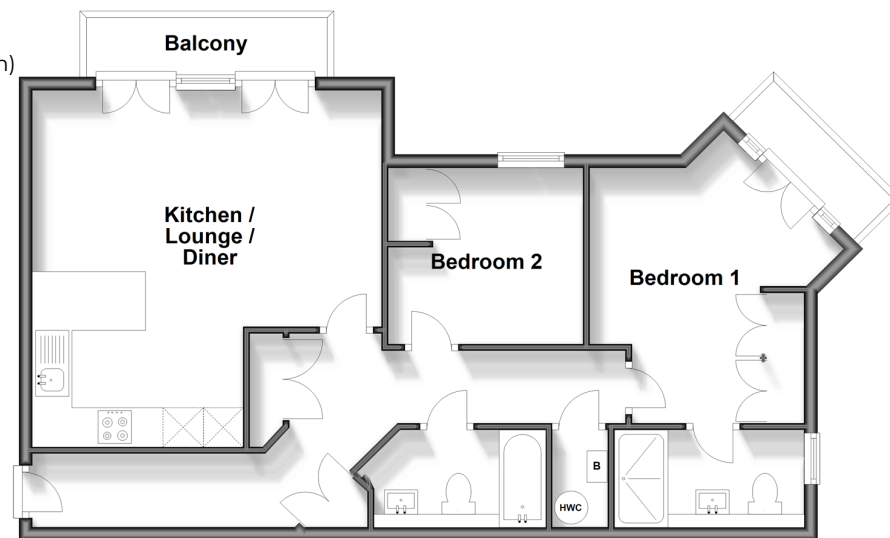
2 Balconies

1 x Allocated Parking Space

Communal Gardens

Second Floor

Approx. 69.8 sq. metres (751.1 sq. feet)



Call Caterham - 01883 331000 ■ cubittandwest.co.uk

- Legal advice should be taken to verify fixtures/fittings, planning, alterations and/or lease details
- Appliances & services are untested, dimensions are approximate and floor plans are not to scale
- Through a Homewise Home For Life Plan people aged 60+ can secure this property for up to 59% less, by purchasing a Lifetime Lease.



24407881/20240706/JE/LP