



Price
£235,000

Leasehold

1x  1x  1x 

**Clearway Court,
Croydon Road,
Caterham, Surrey, CR3**

cubitt & west
Helping you move forwards



Main features

- Open plan living areas
- Fully fitted German Cashmere kitchen with integrated appliances and stone work tops
- 10-year build warranty for peace of mind
- Spacious and inviting bedroom with fitted carpet



Accommodation

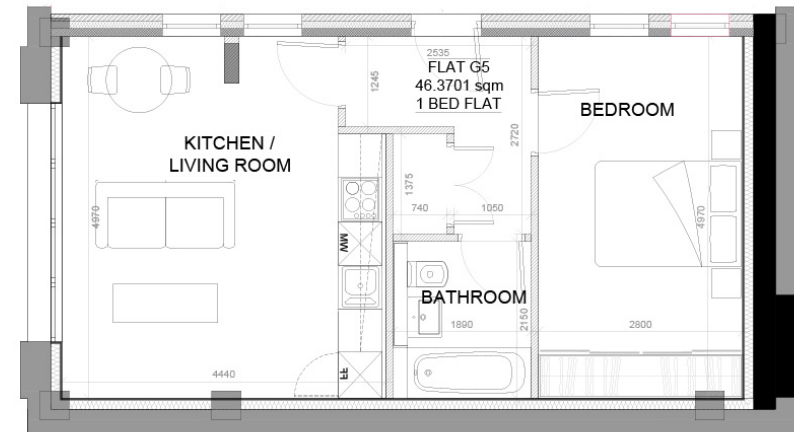
GROUND FLOOR

Entrance Hallway

Living room/Kitchen: 16'5 x 13'0 (5.01m x 3.97m)

Bedroom: 16'5 x 9'6 (5.01m x 2.90m)

Bathroom: 6'9 x 5'5 (2.06m x 1.65m)



Call Caterham - 01883 331000 ■ cubittandwest.co.uk

- Legal advice should be taken to verify fixtures/fittings, planning, alterations and/or lease details
- Appliances & services are untested, dimensions are approximate and floor plans are not to scale



24407957/20241106/SE/LP