



Price
£685,000

Freehold

4x  3x  1x 

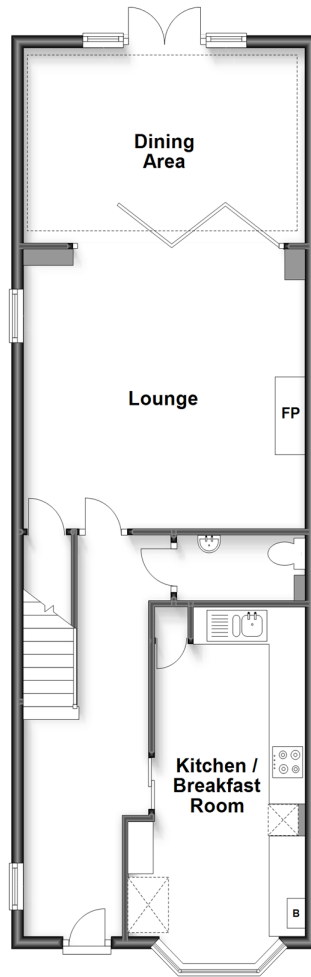
**White Hill Close,
Caterham, Surrey, CR3**

OVER 60?

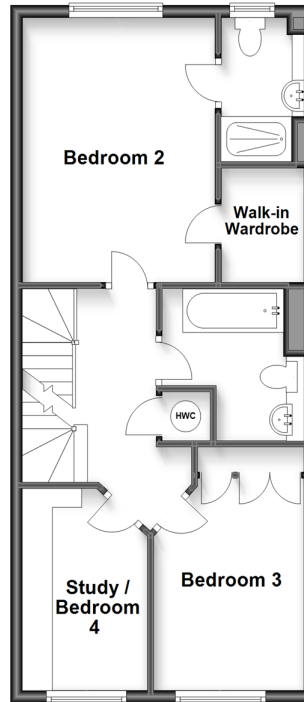
Secure this property
for up to **59% less!**

cubitt & west
Helping you move forwards

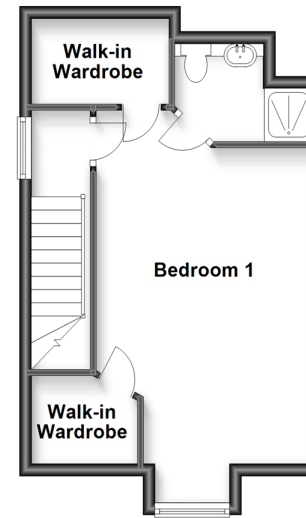
Ground Floor
Approx. 67.3 sq. metres (724.5 sq. feet)



First Floor
Approx. 50.7 sq. metres (545.9 sq. feet)



Second Floor
Approx. 32.8 sq. metres (353.0 sq. feet)



Accommodation

GROUND FLOOR

Entrance Hall: 21'9 x 6'8 (6.63m x 2.03m)

Kitchen/Breakfast Room: 19'4 x 9'6 (5.90m x 2.90m)

Cloakroom

Lounge: 15'4 x 14'7 (4.68m x 4.45m)

Dining Area: 14'1 x 10'2 (4.30m x 3.10m)

FIRST FLOOR

Landing

Bedroom 2: 13'9 x 10'4 (4.19m x 3.15m)

En-Suite

Walk In Wardrobe

Bedroom 3: 10'9 x 8'4 (3.28m x 2.54m)

Study/Bedroom 4: 10'6 x 6'7 (3.20m x 2.01m)

Family Bathroom

SECOND FLOOR

Landing

Bedroom 1: 20'6 x 11'9 (6.25m x 3.58m)

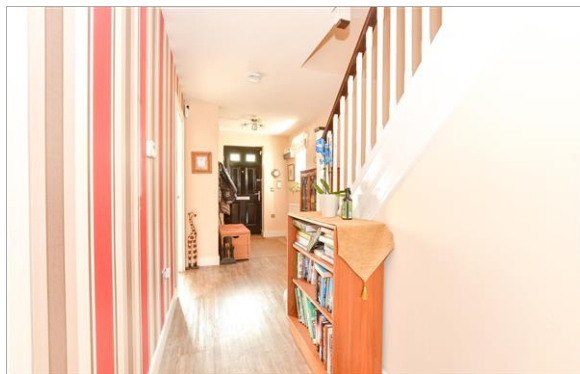
En-Suite

Walk In Wardrobe

OUTSIDE

Front & Rear Garden

Driveway /Garage En Bloc



Main features

- Large bedroom town house set within a private, gated development
- Wonderful views over Caterham School playing fields
- Garage en-bloc as well as a drive way for two cars
- Bi-fold doors from the lounge into the dining area & bi-fold doors out to the garden
- Close to local shops and transport links

Nearest Schools

Primary Schools: Hillcroft Primary 0.5 miles, Oakhyrst Grange School 0.5 miles, St John's CofE Aided Primary 0.9 miles, Audley Primary 1.2 miles
Secondary Schools: Caterham School 0.4 miles, Clifton Hill School 0.4 miles, de Stafford School 1.0 miles

Transport Information

Train Stations: Caterham 0.6 miles

Address

White Hill Close, Caterham, Surrey, CR3

Directions

For directions to this property please contact us.



cubitt&west
Helping you move forwards

Call Caterham Branch 01883 331000 ■ cubittandwest.co.uk



- Legal advice should be taken to verify fixtures/fittings, planning, alterations and/or lease details
- Appliances & services are untested, dimensions are approximate and floor plans are not to scale
- Through a Homewise Home For Life Plan people aged 60+ can secure this property for up to 59% less, by purchasing a Lifetime Lease.



24405787/20240930/LP/LP