



Price
£650,000

Freehold

4x  2x  2x 

**Cromwell Grove,
Caterham, Surrey, CR3**

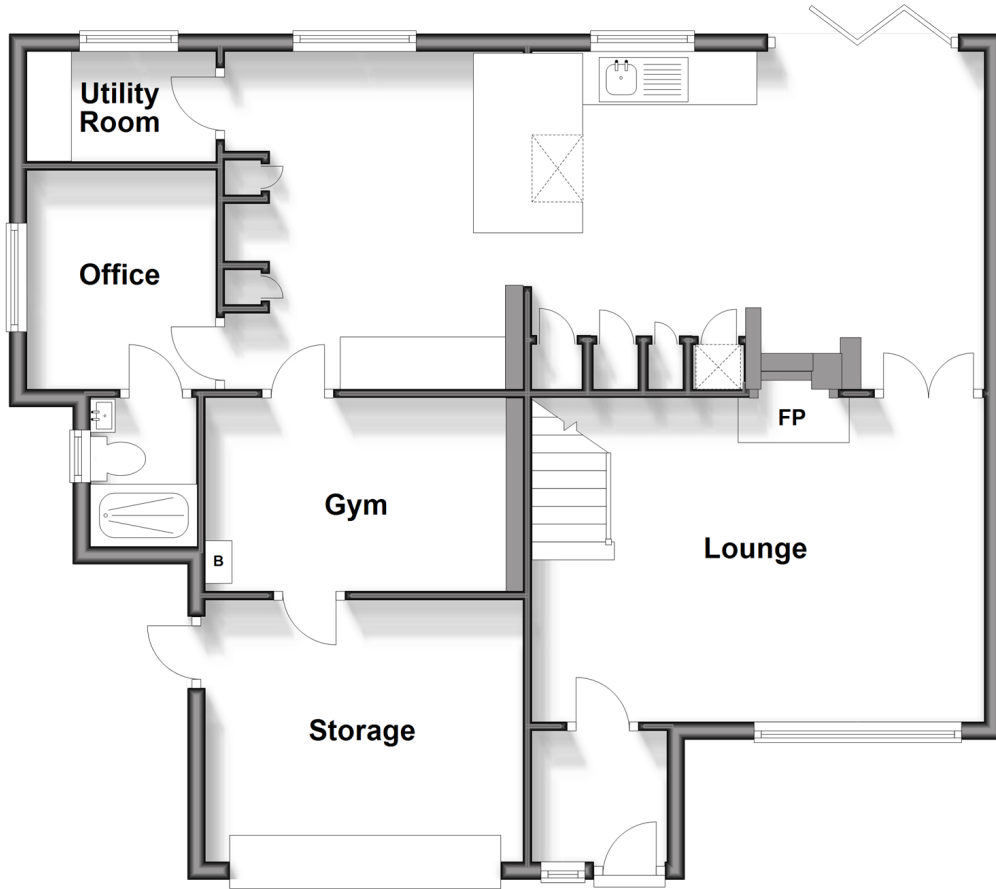
OVER 60?

Secure this property
for up to **59% less!**

cubitt&west
Helping you move forwards

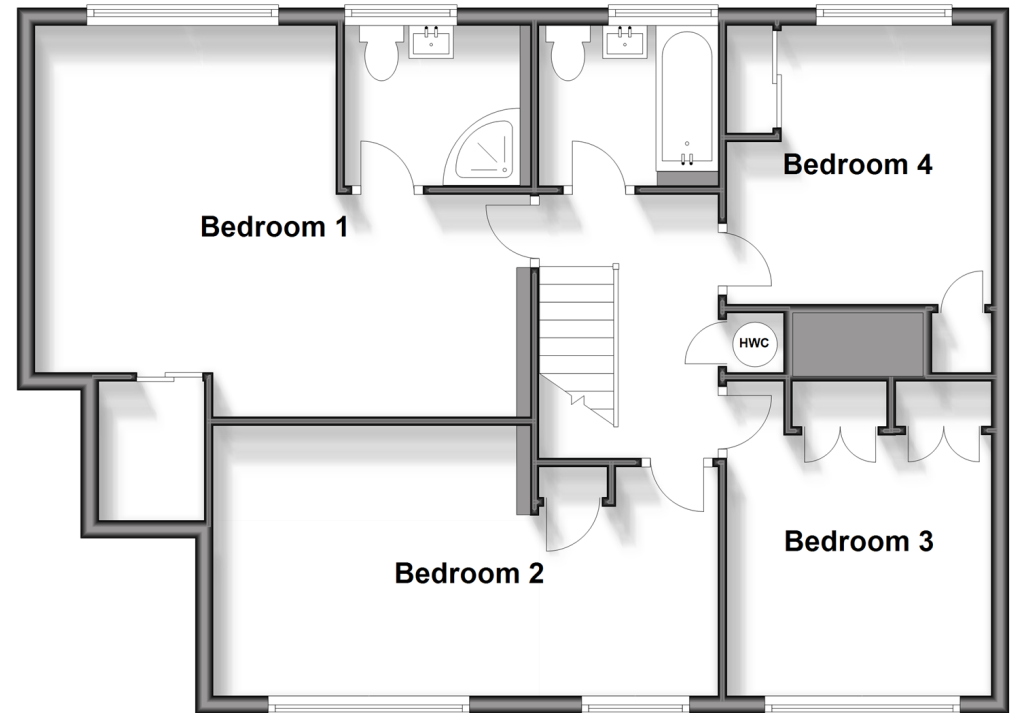
Ground Floor

Approx. 84.0 sq. metres (903.9 sq. feet)



First Floor

Approx. 75.9 sq. metres (817.1 sq. feet)



Accommodation

GROUND FLOOR

Porch
Lounge: 16'8 x 11'11 (5.08m x 3.63m)
Kitchen/Diner: 27'11 x 12'9 (8.51m x 3.89m)
Utility Room: 7'0 x 4'0 (2.14m x 1.22m)
Office: 7'11 x 7'7 (2.41m x 2.31m)
Shower Room: 5'10 x 3'11 (1.78m x 1.19m)
Gym: 10'11 x 7'0 (3.33m x 2.14m)
Storage: 10'2 x 7'0 (3.10m x 2.14m)

FIRST FLOOR

Hallway
Bedroom 1: 18'3 x 14'11 (5.57m x 4.55m)
Walk In Wardrobe

Ensuite Shower: 6'8 x 5'11 (2.03m x 1.80m)
Bedroom 2: 18'11 x 9'11 (5.77m x 3.02m)
Bedroom 3: 11'4 x 9'7 (3.46m x 2.92m)
Bedroom 4: 10'2 x 9'8 (3.10m x 2.95m)
Bathroom: 6'0 x 5'0 (1.83m x 1.53m)

OUTSIDE

Rear Garden
Front Garden
Driveway



Main features

- Perfectly situated on quiet cul-de-sac with driveway
- All bedrooms are doubles with an en-suite and walk-in wardrobe to bedroom one
- Full renovation and landscaped garden by the current owner
- Short walk to Coulsdon Common and local shops
- Downstairs shower room, study and gym space



Nearest Schools

Primary Schools: Audley Primary 0.6 miles, St Francis Catholic Primary 0.6 miles, Hillcroft Primary 0.6 miles

Secondary Schools: Coulsdon High School 0.6 miles, Oasis Academy - Coulsdon 0.6 miles, Sunnydown School 0.6

Transport Information

Train Stations: Whyteleafe South 1.2 miles, Caterham 1.3 miles, Whyteleafe 1.4 miles

Address

Cromwell Grove, Caterham, Surrey, CR3

Directions

For directions to this property please contact us.





cubitt&west
Helping you move forwards

Call Caterham Branch 01883 331000 ■ cubittandwest.co.uk



■ Legal advice should be taken to verify fixtures/fittings, planning, alterations and/or lease details ■ Appliances & services are untested, dimensions are approximate and floor plans are not to scale
■ Through a Homewise Home For Life Plan people aged 60+ can secure this property for up to 59% less, by purchasing a Lifetime Lease.



24401850/20241022/JE/LP