



Price

£45,000

Leasehold

1x  1x  1x 

**Knowle Lodge, Croydon
Road, Caterham, Surrey,
CR3**

cubitt&west
Helping you move forwards



Main features

- Well maintained communal gardens
- Great communal areas including lounge, conservatory, laundry room, library and guest suite
- Lift serviced and residents parking
- Available with no onward chain

Accommodation

SECOND FLOOR

Entrance Hallway

Bedroom: 12'0 x 8'0 (3.66m x 2.44m)

Lounge: 15'0 x 10'11 (4.58m x 3.33m)

Kitchen: 6'0 x 6'0 (1.83m x 1.83m)

Bathroom: 7'0 x 5'0 (2.14m x 1.53m)

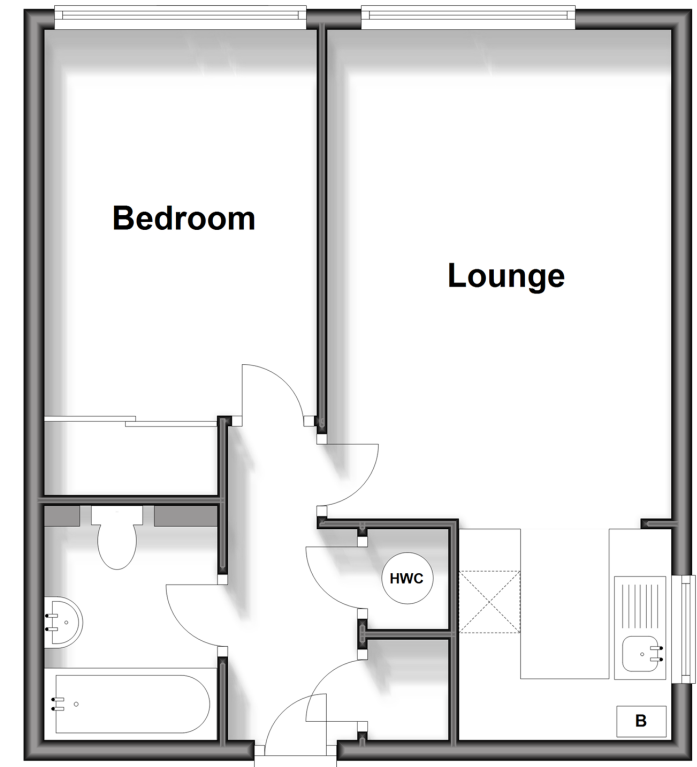
OUTSIDE

Communal Garden

Off Street Parking

Second Floor

Approx. 42.1 sq. metres (453.1 sq. feet)



Call Caterham - 01883 331000 ■ cubittandwest.co.uk

- Legal advice should be taken to verify fixtures/fittings, planning, alterations and/or lease details
- Appliances & services are untested, dimensions are approximate and floor plans are not to scale



24407815/20250407/AFO/BG