



**Price**

**£157,500**

**Leasehold**

1x  1x  1x 

**Greensted Court,  
Godstone Road,  
Whyteleafe, Surrey, CR3**

**cubitt & west**  
Helping you move forwards



## Main features

- Shared Ownership -75% share
- Larger-than-average one-bedroom apartment
- Allocated parking space
- Walking distance to three stations
- A2 Dominion have confirmed that the lease will be extended to 99 years upon completion

## Accommodation

### SECOND FLOOR

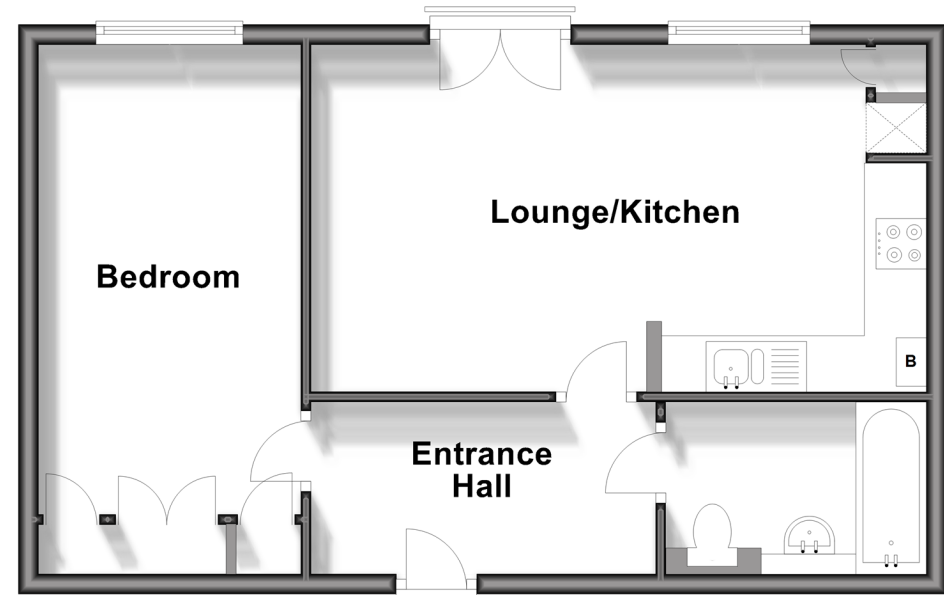
Entrance Hallway  
 Kitchen/Lounge: 20'1 x 11'4 (6.13m x 3.46m)  
 Bathroom: 8'6 x 4'10 (2.59m x 1.47m)  
 Bedroom: 15'5 x 8'7 (4.70m x 2.62m)

### OUTSIDE

Allocated Parking

## Second Floor

Approx. 46.4 sq. metres (499.9 sq. feet)



Call Caterham - 01883 331000 ■ [cubittandwest.co.uk](http://cubittandwest.co.uk)

■ Legal advice should be taken to verify fixtures/fittings, planning, alterations and/or lease details

■ Appliances & services are untested, dimensions are approximate and floor plans are not to scale



24407840/20240626/LP/BG