



Offers In
Excess Of
£450,000
Freehold

2x  1x  2x 

The Glade, Coulsdon,
Surrey, CR5

OVER 60?

Secure this property
for up to **59% less!**

cubitt & west
Helping you move forwards



Main features

- Fully refurbished by the current owner as well as landscaped garden
- Summerhouse with electric & can also be plumbed
- Driveway for two cars
- Large built in wardrobes to both bedrooms
- Walking distance to many open spaces including Coulsdon Common

Accommodation

GROUND FLOOR

Entrance Hallway
 Lounge: 12'9 x 12'4 (3.89m x 3.76m)
 Kitchen/Diner: 17'2 x 15'1 (5.24m x 4.60m)
 Utility Room/WC: 11'2 x 5'5 (3.41m x 1.65m)

First Floor

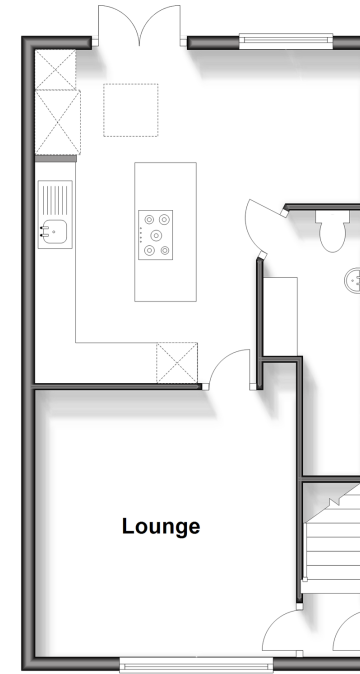
Hallway
 Bedroom 1: 13'0 x 13'0 (3.97m x 3.97m)
 Bedroom 2: 10'0 x 7'0 (3.05m x 2.14m)
 Bathroom: 9'0 x 6'0 (2.75m x 1.83m)

OUTSIDE

Driveway
 Rear Garden
 Summer House: 15'1 x 12'6 (4.60m x 3.81m)

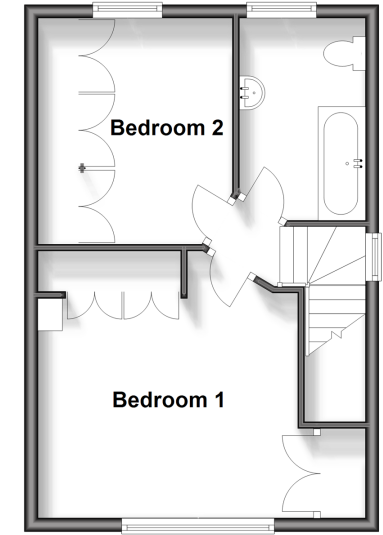
Ground Floor

Approx. 43.4 sq. metres (467.1 sq. feet)



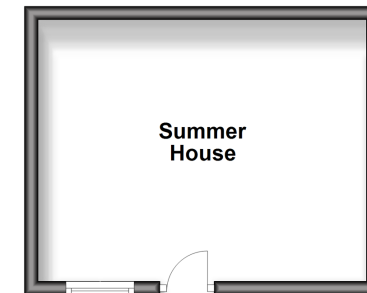
First Floor

Approx. 35.7 sq. metres (384.5 sq. feet)



Outbuilding

Approx. 18.8 sq. metres (201.9 sq. feet)



Call Caterham - 01883 331000 ■ cubittandwest.co.uk

- Legal advice should be taken to verify fixtures/fittings, planning, alterations and/or lease details
- Appliances & services are untested, dimensions are approximate and floor plans are not to scale
- Through a Homewise Home For Life Plan people aged 60+ can secure this property for up to 59% less, by purchasing a Lifetime Lease.



24407795/20240423/LP/LP