



Price

£280,000

Leasehold

2x  1x  1x 

Hillside Road,
Whyteleafe, Surrey, CR3

OVER 60?

Secure this property
for up to **59% less!**

cubitt & west
Helping you move forwards



Main features

- Recently decorated first floor flat
- Large lounge/diner and both bedrooms are doubles
- Walking distance to three train stations
- Off road parking & garage en-bloc
- Storage cupboard in the hallway and second bedroom

Accommodation

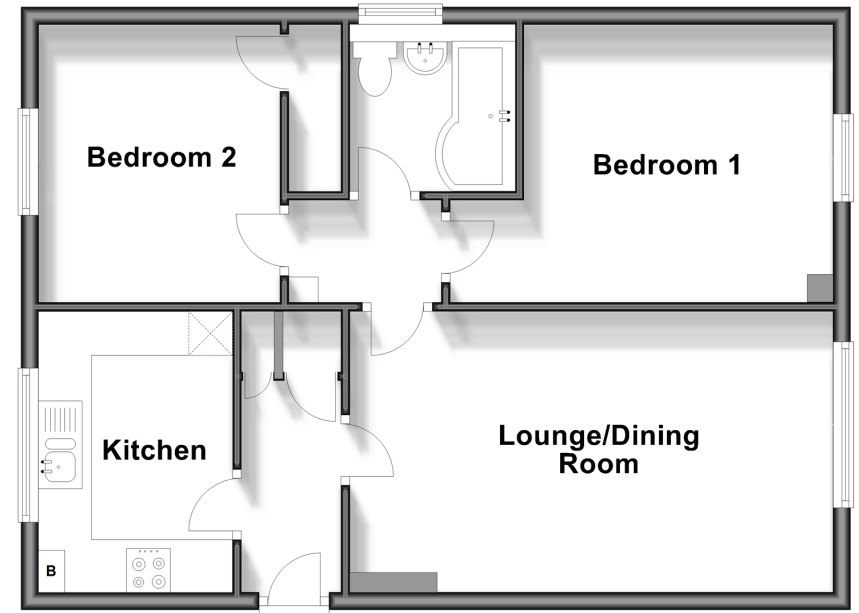
FIRST FLOOR

- Entrance Hallway
- Living Room: 18'1 x 10'5 (5.52m x 3.18m)
- Kitchen: 10'5 x 7'5 (3.18m x 2.26m)
- Bedroom 1: 14'4 x 10'6 (4.37m x 3.20m)
- Bedroom 2: 10'5 x 8'9 (3.18m x 2.67m)
- Bathroom

OUTSIDE

- Communal Gardens
- Garage

First Floor
Approx. 58.8 sq. metres (633.1 sq. feet)



Call Caterham - 01883 331000 ■ cubittandwest.co.uk

- Legal advice should be taken to verify fixtures/fittings, planning, alterations and/or lease details
- Appliances & services are untested, dimensions are approximate and floor plans are not to scale
- Through a Homewise Home For Life Plan people aged 60+ can secure this property for up to 59% less, by purchasing a Lifetime Lease.



24407788/20240413/JE/LP