



**OVER 60?**

Secure this property  
for up to **59% less!**

**Price**

**£280,000**

**Leasehold**

2x  1x  1x 

**Edgeworth Close,  
Whyteleafe, Surrey, CR3**

**cubitt & west**  
Helping you move forwards



## Main features

- Larger than average top floor flat
- Two Double bedrooms
- Comes with loft space and storage cupboard
- Walking distance to three train stations and local shops
- Plenty of off road parking on a first come first served basis

## Accommodation

### SECOND FLOOR

Entrance Hallway

Lounge/Dining Area: 15'7 x 15'6 (4.75m x 4.73m)

Kitchen: 12'10 x 7'7 (3.91m x 2.31m)

Bedroom 1: 12'9 x 10'1 (3.89m x 3.08m)

Bedroom 2: 10'4 x 10'1 (3.15m x 3.08m)

Bathroom: 5'10 x 5'9 (1.78m x 1.75m)

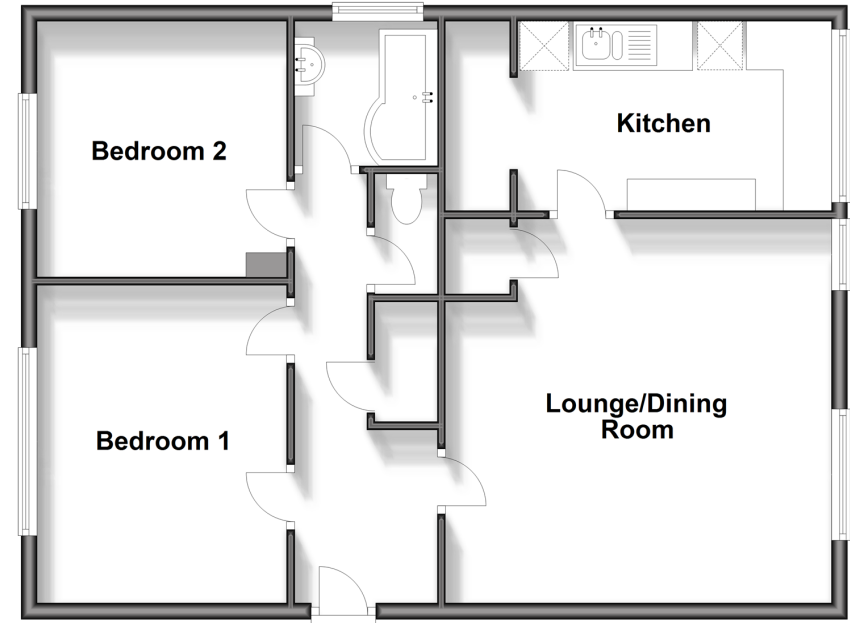
Separate Toilet: 4'10 x 2'6 (1.47m x 0.76m)

### OUTSIDE

Communal Garden

## Second Floor

Approx. 70.6 sq. metres (759.5 sq. feet)



**Call Caterham - 01883 331000 ■ [cubittandwest.co.uk](http://cubittandwest.co.uk)**

- Legal advice should be taken to verify fixtures/fittings, planning, alterations and/or lease details
- Appliances & services are untested, dimensions are approximate and floor plans are not to scale
- Through a Homewise Home For Life Plan people aged 60+ can secure this property for up to 59% less, by purchasing a Lifetime Lease.



21500119/20240323/DI/BG