



Price
£450,000

Freehold

3x  1x  1x 

**Croydon Road,
Caterham, Surrey, CR3**

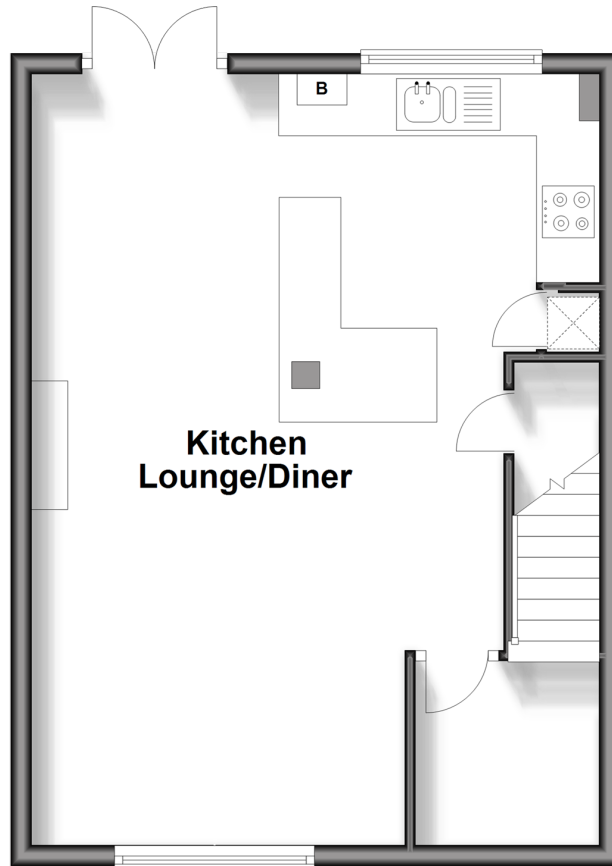
OVER 60?

Secure this property
for up to **59% less!**

cubitt & west
Helping you move forwards

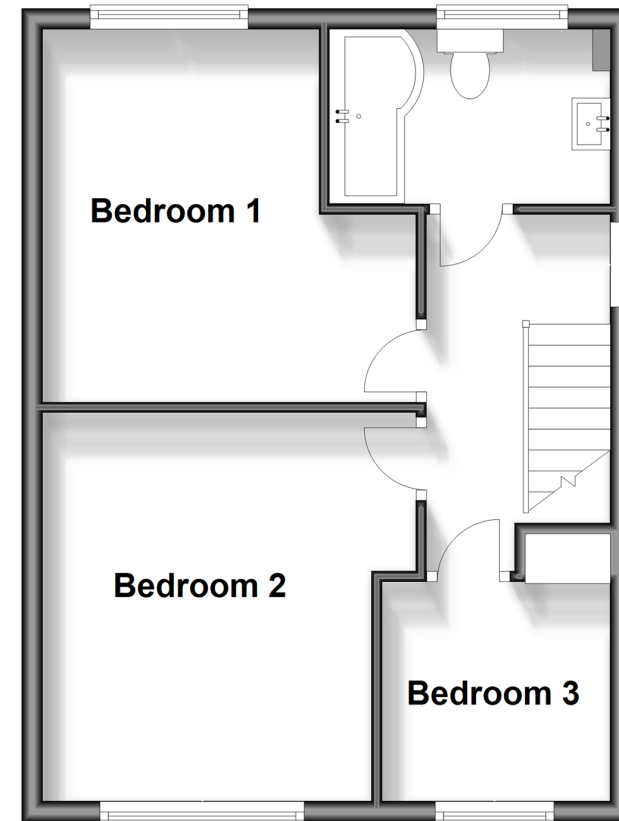
Ground Floor

Approx. 40.7 sq. metres (438.1 sq. feet)



First Floor

Approx. 40.7 sq. metres (438.1 sq. feet)



Accommodation

GROUND FLOOR

Entrance Hallway

Kitchen/Lounge/Dining Room: 24'6 x 17'11 (7.47m x 5.46m)

OUTSIDE

Driveway

Garden

FIRST FLOOR

Landing

Bedroom 1: 12'6 x 11'8 (3.81m x 3.56m)

Bedroom 2: 11'10 x 11'8 (3.61m x 3.56m)

Bedroom 3: 7'2 x 7'0 (2.19m x 2.14m)

Bathroom: 8'10 x 5'5 (2.69m x 1.65m)



Main features

- Chain free detached house
- Open plan kitchen, diner and lounge
- Modern kitchen and bathroom
- Driveway for two cars and double doors to level garden
- Scope to extended to both the rear and side (STPP)

Nearest Schools

Primary Schools: Marden Lodge Primary 0.1 miles, Audley Primary 0.6 miles, St Francis Catholic Primary 0.6 miles

Secondary Schools: de Stafford School 0.4 miles, Sunnysdown School 0.6 miles, Clifton Hill School 1.0 miles

Transport Information

Train Stations: Caterham 0.7 miles, Whyteleafe South 0.8 miles, Woldingham 0.9 miles

Address

Croydon Road, Caterham, Surrey, CR3

Directions

For directions to this property please contact us.



cubitt&west
Helping you move forwards

Call Caterham Branch 01883 331000 ■ cubittandwest.co.uk



- Legal advice should be taken to verify fixtures/fittings, planning, alterations and/or lease details
- Appliances & services are untested, dimensions are approximate and floor plans are not to scale
- Through a Homewise Home For Life Plan people aged 60+ can secure this property for up to 59% less, by purchasing a Lifetime Lease.

EPC RATING

CURRENT:	POTENTIAL:
C(74)	B(87)

24407585/20231202/JE/BG