



Guide Price
£550,000

Freehold

3x  1x  1x 

Oaktree Walk,
Caterham, Surrey, CR3

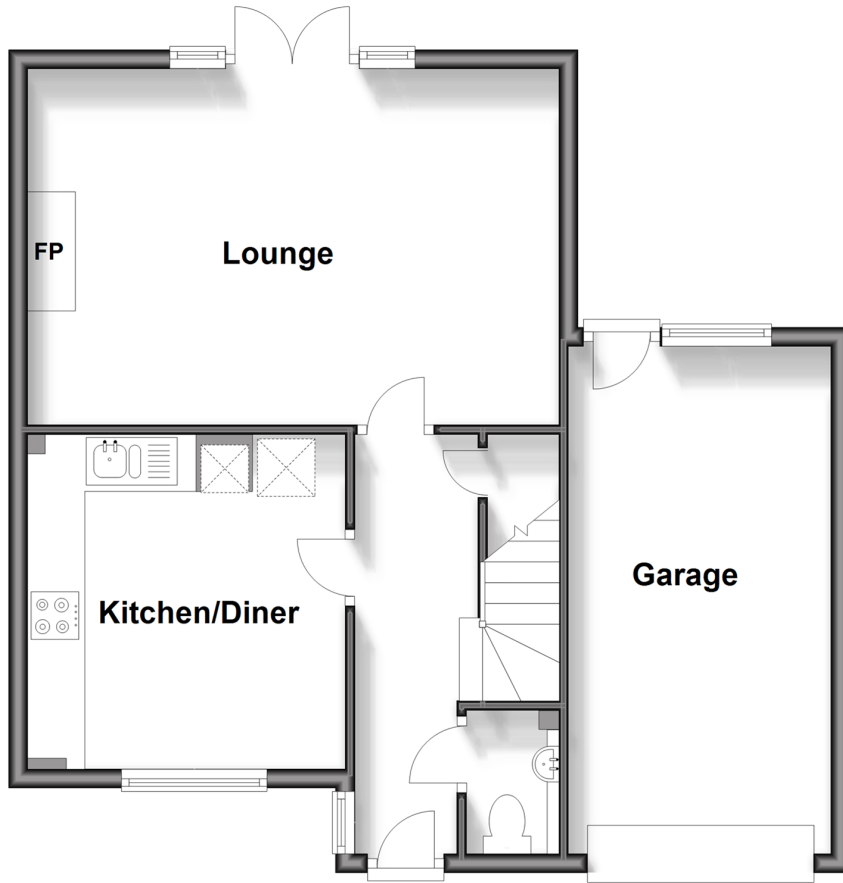
OVER 60?

Secure this property
for up to **59% less!**

cubitt & west
Helping you move forwards

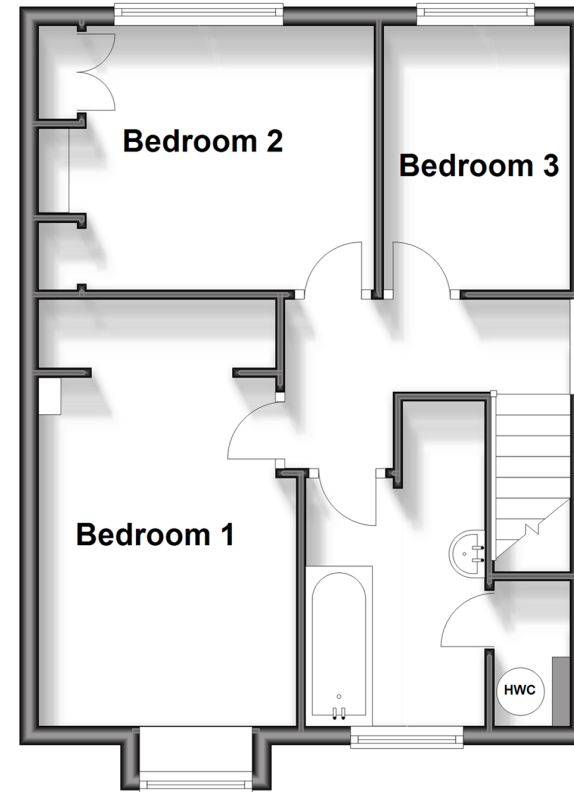
Ground Floor

Approx. 57.9 sq. metres (623.3 sq. feet)



First Floor

Approx. 41.5 sq. metres (446.8 sq. feet)



Accommodation

GROUND FLOOR

Entrance Hall

W/C

Kitchen: 11'5 x 10'8 (3.48m x 3.25m)

Lounge: 18'3 x 12'2 (5.57m x 3.71m)

FIRST FLOOR

Landing

Bedroom One: 12'0 x 8'4 (3.66m x 2.54m)

Bedroom Two: 11'5 x 10'0 (3.48m x 3.05m)

Bedroom Three: 9'7 x 6'5 (2.92m x 1.96m)

Family Bathroom

OUTSIDE

Driveway

Garage: 18'0 x 9'3 (5.49m x 2.82m)

Front & Rear Garden



Main features

- Semi detached house within a private development
- Potential to extend subject to planning permission
- Garage and driveway as well as visitor spaces
- Well maintained garden which isn't over looked
- Walking distance to Caterham on the hill shops



Nearest Schools

Primary Schools: Hillcroft Primary 0.3 miles, Audley Primary 0.4 miles, St Francis Catholic Primary 0.4 miles

Secondary Schools: de Stafford School 0.2 miles, Clifton Hill School 0.4 miles, Sunnydown School 0.4 miles



Transport Information

Train Stations: Caterham 0.6 miles, Whyteleafe South 1.1 miles, Upper Warlingham 1.3 miles



Address

Oaktree Walk, Caterham, Surrey, CR3



Directions

For directions to this property please contact us.



cubitt&west
Helping you move forwards

Call Caterham Branch 01883 331000 ■ [cubittandwest.co.uk](https://www.cubittandwest.co.uk)



- Legal advice should be taken to verify fixtures/fittings, planning, alterations and/or lease details
- Appliances & services are untested, dimensions are approximate and floor plans are not to scale
- Through a Homewise Home For Life Plan people aged 60+ can secure this property for up to 59% less, by purchasing a Lifetime Lease.



24407663/20240518/ JE/AFO