



**Price**  
**£275,000**

**Leasehold**

2x  1x  1x 

**Hillside Road,  
Whyteleafe, Surrey, CR3**

**OVER 60?**

Secure this property  
for up to **59% less!**

**cubitt & west**  
Helping you move forwards



## Main features

- Two double bedroom ground floor flat
- Amble off street parking
- Walking distance to three train stations
- Storage cupboard in the hallway and second bedroom
- Large communal garden to the rear to welcome pets

## Accommodation

### GROUND FLOOR

Entrance Hallway

Living Room: 18'3 x 10'6 (5.57m x 3.20m)

Kitchen: 10'4 x 7'3 (3.15m x 2.21m)

Bathroom: 6'2 x 6'2 (1.88m x 1.88m)

Bedroom One: 11'7 x 10'5 (3.53m x 3.18m)

Bedroom Two: 10'5 x 9'2 (3.18m x 2.80m)

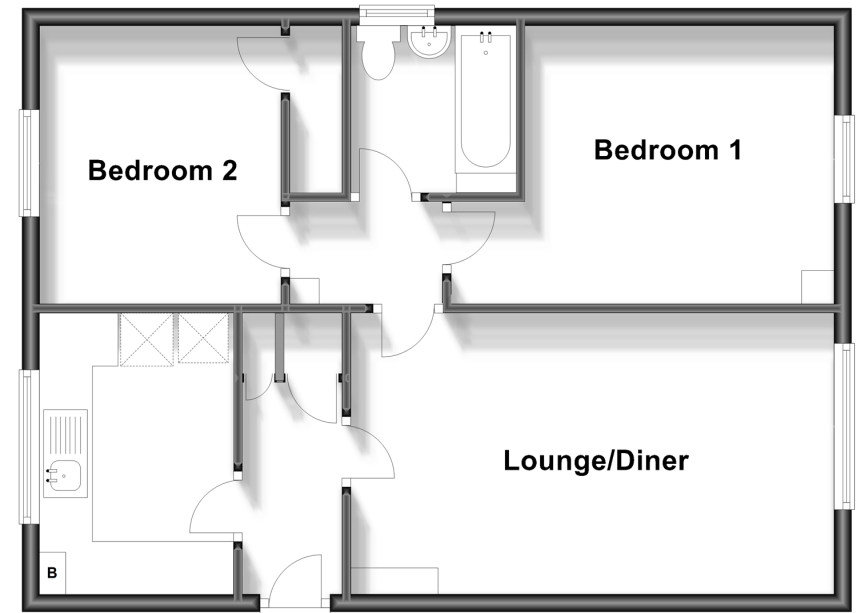
### OUTSIDE

Communal Gardens

Off Street Parking

### Ground Floor

Approx. 58.8 sq. metres (633.1 sq. feet)



**Call Caterham - 01883 331000 ■ [cubittandwest.co.uk](http://cubittandwest.co.uk)**

- Legal advice should be taken to verify fixtures/fittings, planning, alterations and/or lease details
- Appliances & services are untested, dimensions are approximate and floor plans are not to scale
- Through a Homewise Home For Life Plan people aged 60+ can secure this property for up to 59% less, by purchasing a Lifetime Lease.



24407664/20240805/JE/LP