



Price
£500,000

Freehold

4x  1x  1x 

**Bakers Mead, Godstone,
Surrey, RH9**

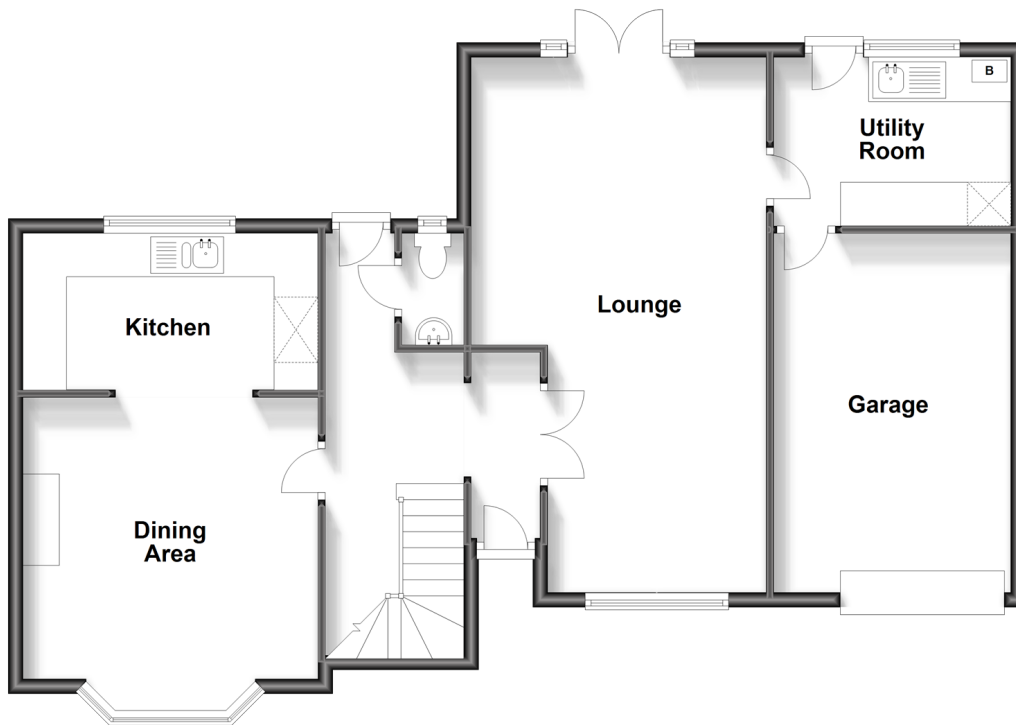
OVER 60?

Secure this property
for up to **59% less!**

cubitt&west
Helping you move forwards

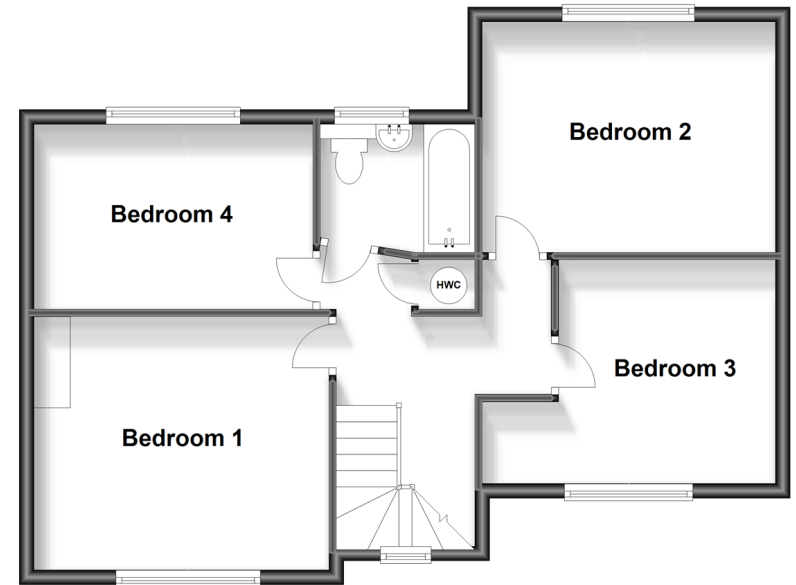
Ground Floor

Approx. 90.6 sq. metres (974.7 sq. feet)



First Floor

Approx. 62.3 sq. metres (670.2 sq. feet)



Accommodation

GROUND FLOOR

Entrance Hall

Cloakroom

Kitchen / Dining Area: 22'0 x 13'2 (6.71m x 4.02m)

Lounge: 24'0 x 13'1 (7.32m x 3.99m)

Utility Room: 5'1 x 2'6 (1.55m x 0.76m)

FIRST FLOOR

Landing

Bedroom 1: 11'11 x 9'0 (3.63m x 2.75m)

Bedroom 2 : 13'3 x 11'2 (4.04m x 3.41m)

Bedroom 3: 13'2 x 10'1 (4.02m x 3.08m)

Bedroom 4 : 10'7 x 9'9 (3.23m x 2.97m)

Bathroom: 7'3 x 5'9 (2.21m x 1.75m)

OUTSIDE

Garage: 16'9 x 10'7 (5.11m x 3.23m)

Summer House With Electric

Front Driveway

Rear Garden



Main features

- Large four double bedroom semi detached house
- Driveway for multiple cars and garage
- Open plan kitchen/dining area and separate utility room
- Easy access to M25 and great local schools
- Beautifully kept rear garden with patio area



Nearest Schools

Primary Schools: Godstone Village School 0.6 miles, St John's CofE Aided Primary 1.2 miles, St Catherine's Primary 1.7 miles

Secondary Schools: Caterham School 1.4 miles,

Transport Information

Train Stations: Caterham 1.8 miles, Woldingham 2.4 miles, Whyteleafe South 3.3 miles
Underground Morden 11. miles, Colliers Wood 12. miles, South Wimbledon 12. miles

Address Wissham 14. miles, Elverson Road 14. miles, Bakers Mead, Godstone, Surrey, RH9



Directions

For directions to this property please contact us.





cubitt&west
Helping you move forwards

Call Caterham Branch 01883 331000 ■ cubittandwest.co.uk



- Legal advice should be taken to verify fixtures/fittings, planning, alterations and/or lease details
- Appliances & services are untested, dimensions are approximate and floor plans are not to scale
- Through a Homewise Home For Life Plan people aged 60+ can secure this property for up to 59% less, by purchasing a Lifetime Lease.



24407588/20231017/BG/BG