



Guide Price
£500,000

Freehold

4x  1x  2x 

**Hilders Farm Close,
Crowborough, East
Sussex, TN6**

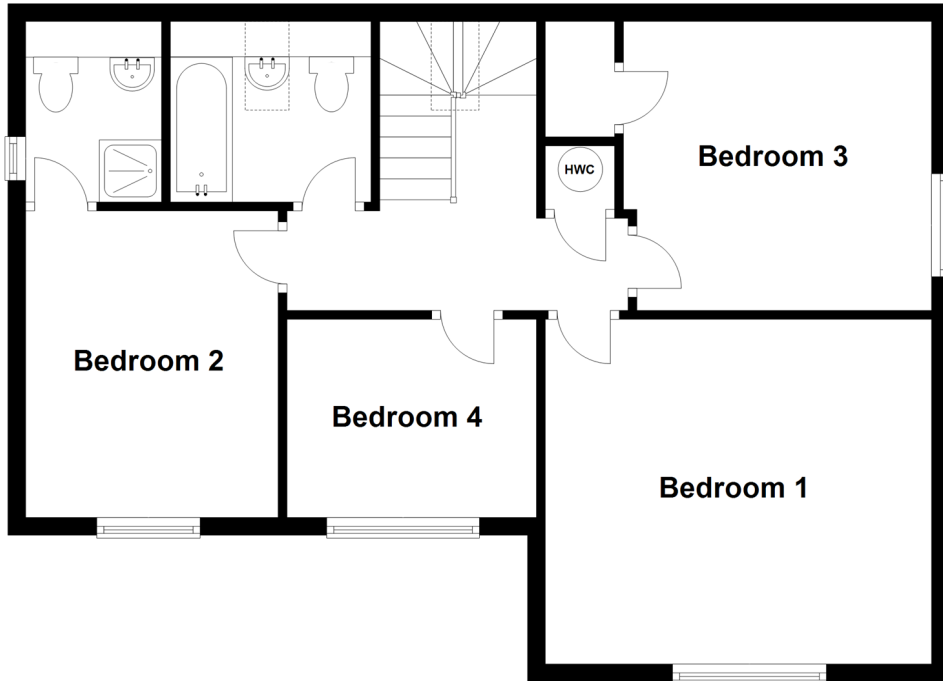
OVER 60?

You could get up to
59% off the price!*

cubitt&west
Helping you move forwards

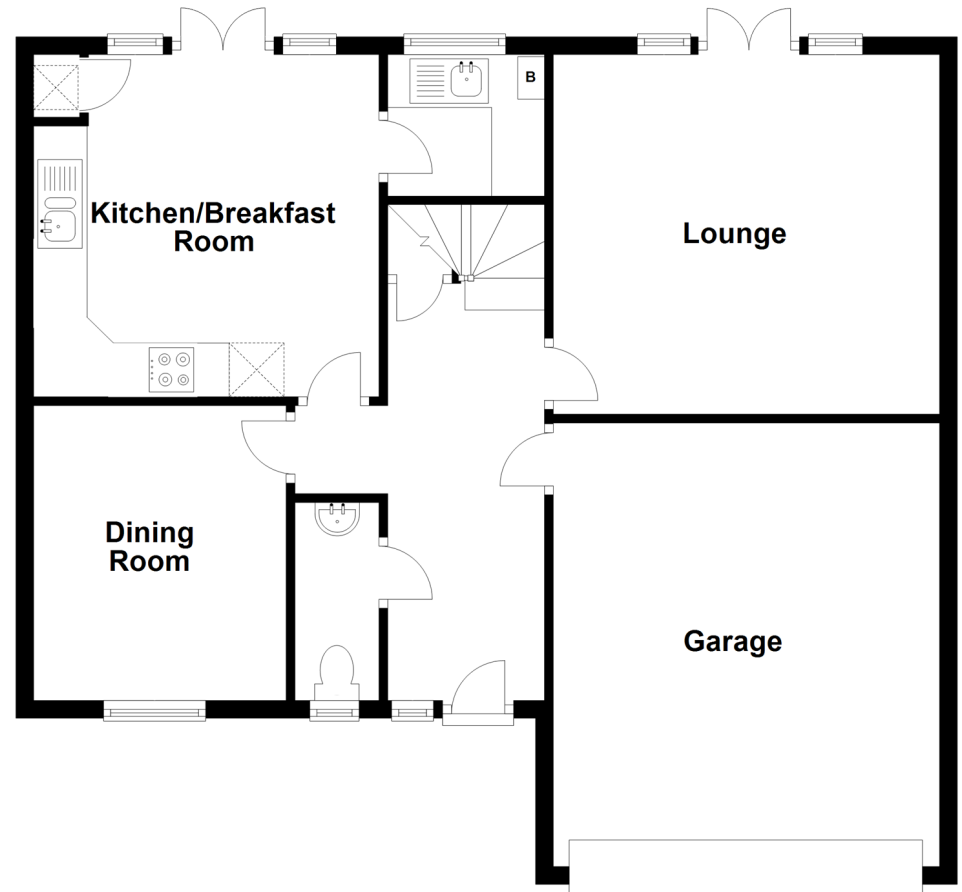
First Floor

Approx. 64.2 sq. metres (691.3 sq. feet)



Ground Floor

Approx. 82.6 sq. metres (888.8 sq. feet)



Accommodation

GROUND FLOOR

Entrance Hall: 18'4 x 5'9 (5.59m x 1.75m)

Cloakroom: 7'4 x 3'1 (2.24m x 0.94m)

Lounge: 14'2 x 13'3 (4.32m x 4.04m)

Dining Room: 11'1 x 9'3 (3.38m x 2.82m)

Kitchen: 12'11 x 12'7 (3.94m x 3.84m)

Utility Room: 5'8 x 5'4 (1.73m x 1.63m)

FIRST FLOOR

Landing

Bedroom 1: 14'4 x 12'8 (4.37m x 3.86m)

Bedroom 2: 11'2 x 9'4 (3.41m x 2.85m)

En-suite Shower Room: 16'9 x 5'0 (5.11m x 1.53m)

Bedroom 3: 11'3 x 10'8 (3.43m x 3.25m)

Bedroom 4: 9'5 x 7'4 (2.87m x 2.24m)

Bathroom

OUTSIDE

Garage & Off Road Parking

Front & Rear Gardens



Main features

- Impressive gable fronted family home
- Spacious lounge and formal dining room
- Generous kitchen/breakfast room
- Double garage and ample parking
- Private rear garden



Nearest Schools

Primary Schools: Sir Henry Fermor C of E Primary 0.5 miles, St Mary's Catholic Primary 0.7 miles, Herne Junior School 1.2 miles

Secondary Schools: Beacon Community College 0.5 miles,



Transport Information

Train Stations: Crowborough 1.1 miles, Eridge 3.0 miles, Tunbridge Wells 6.6 miles



Address

Hilders Farm Close, Crowborough, East Sussex, TN6



Directions

For directions to this property please contact us.



cubitt&west
Helping you move forwards

Call Crowborough Branch 01892 613361 ■ cubittandwest.co.uk



- Legal advice should be taken to verify fixtures/fittings, planning, alterations and/or lease details
- Appliances & services are untested, dimensions are approximate and floor plans are not to scale
- Our Homewise partnership offer a 'Home for Life' plan to buyers over 60, granting a lifetime lease for your protection and reducing the purchase price by up to 59%



24204674/20201005/JF/JF