



OVER 60?

Secure this property
for up to **59% less!**

Price

£800,000

Freehold

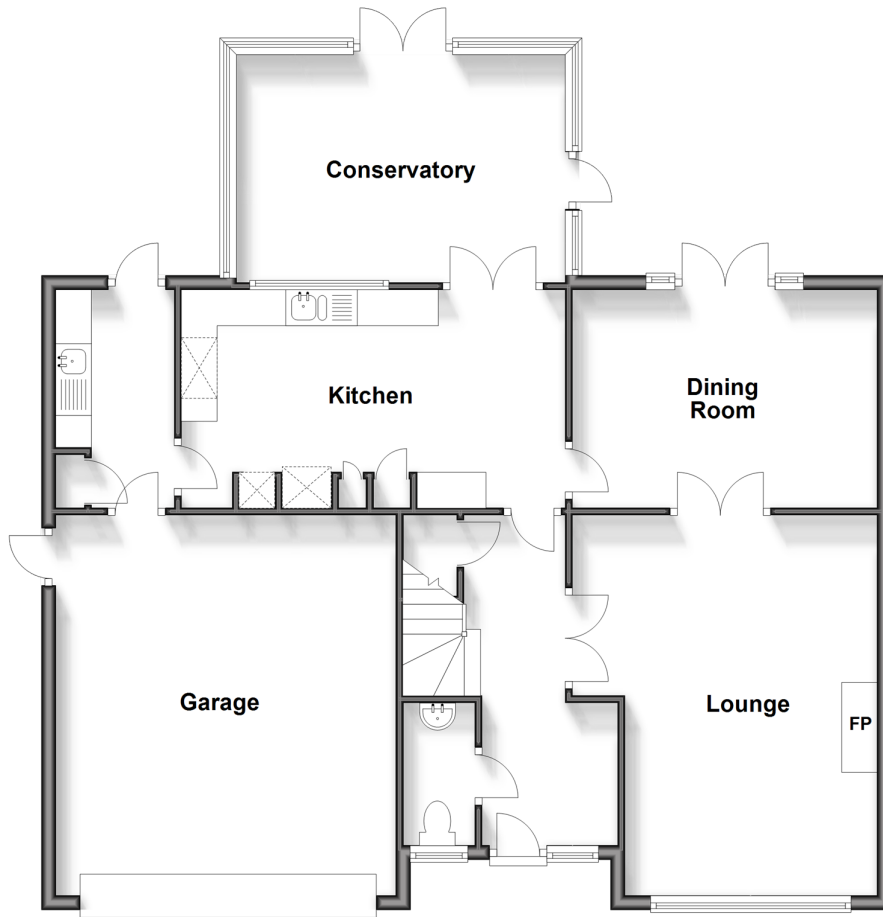
4x  2x  3x 

**Winscote Close,
Crowborough, East
Sussex, TN6**

cubitt&west
Helping you move forwards

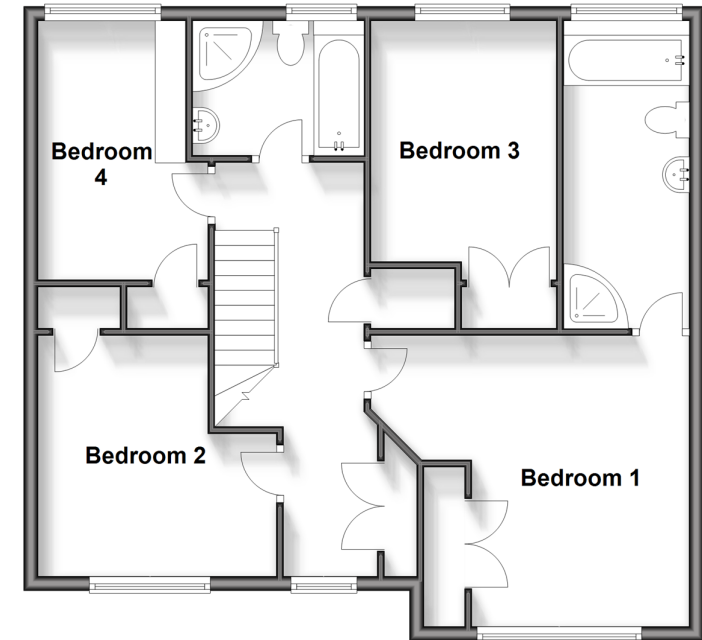
Ground Floor

Approx. 109.6 sq. metres (1179.2 sq. feet)



First Floor

Approx. 73.0 sq. metres (786.1 sq. feet)



Accommodation

GROUND FLOOR

Entrance Hall

Lounge: 17'1 x 13'11 (5.21m x 4.24m)

Dining Room: 13'11 x 10'0 (4.24m x 3.05m)

Kitchen: 18'1 x 10'0 (5.52m x 3.05m)

Utility: 10'0 x 5'5 (3.05m x 1.65m)

Conservatory: 15'0 x 10'0 (4.58m x 3.05m)

Cloakroom

FIRST FLOOR

Landing

Bedroom 1: 14'9 x 13'0 (4.50m x 3.97m)

En Suite Bathroom

Bedroom 2: 12'0 x 11'0 (3.66m x 3.36m)

Bedroom 4: 11'10 x 6'9 (3.61m x 2.06m)

Bathroom

Bedroom 3: 11'11 x 8'6 (3.63m x 2.59m)

OUTSIDE

Front and Rear Gardens

Integral Garage

Driveway



Main features

- A beautifully designed home in a quiet cul de sac of only 5 dwellings
- Spacious bright and airy lounge, with feature fireplace and door leading to the formal dining room
- Stylish open plan kitchen & breakfast room
- Stunning rear garden
- Off road parking and integral double garage



Nearest Schools

Primary Schools: Chailey St Peter's C of E Primary 9.8 miles, Barcombe C of E Primary 10. miles, Ringmer Primary 11. miles

Secondary Schools: Chailey Heritage School 9.6 miles,



Transport Information

Train Stations: Cooksbridge 12. miles, Plumpton 12. miles, Glynde 13. miles



Address

Winscote Close, Crowborough, East Sussex, TN6



Directions

For directions to this property please contact us.



cubitt&west
Helping you move forwards

Call Crowborough Branch 01892 613361 ■ cubittandwest.co.uk



■ Legal advice should be taken to verify fixtures/fittings, planning, alterations and/or lease details ■ Appliances & services are untested, dimensions are approximate and floor plans are not to scale
■ Through a Homewise Home For Life Plan people aged 60+ can secure this property for up to 59% less, by purchasing a Lifetime Lease.



24205792/20250306//JF