



Price
£575,000

Freehold

4x  2x  2x 

**Beeches Farm Road,
Crowborough, East
Sussex, TN6**

OVER 60?

Secure this property
for up to **59% less!**

cubitt & west
Helping you move forwards



Main features

- Modern home in a peaceful setting
- Spacious dual aspect lounge, ideal for relaxing after a long day
- Stylish open plan kitchen/diner perfect for entertaining
- En-suite shower room to bedroom 1 and family bathroom
- Double garage, ample off road parking and front and rear garden

Accommodation

GROUND FLOOR

Hall

Lounge: 22'3 x 12'3 (6.79m x 3.74m)

Cloakroom: 4'10 x 2'10 (1.47m x 0.86m)

Study: 7'9 x 6'8 (2.36m x 2.03m)

Kitchen/Diner: 17'9 x 14'1 maximum (5.41m x 4.30m)

FIRST FLOOR

Landing

Bedroom 1: 12'5 x 11'2 (3.79m x 3.41m)

En-Suite Shower Room: 5'9 x 5'5 (1.75m x 1.65m)

Bedroom 2: 10'9 x 9'10 (3.28m x 3.00m)

Bedroom 3: 10'8 x 8'10 (3.25m x 2.69m)

Bedroom 4: 9'11 x 8'11 (3.02m x 2.72m)

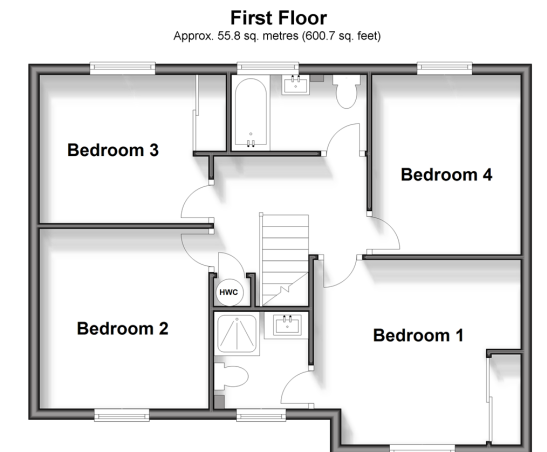
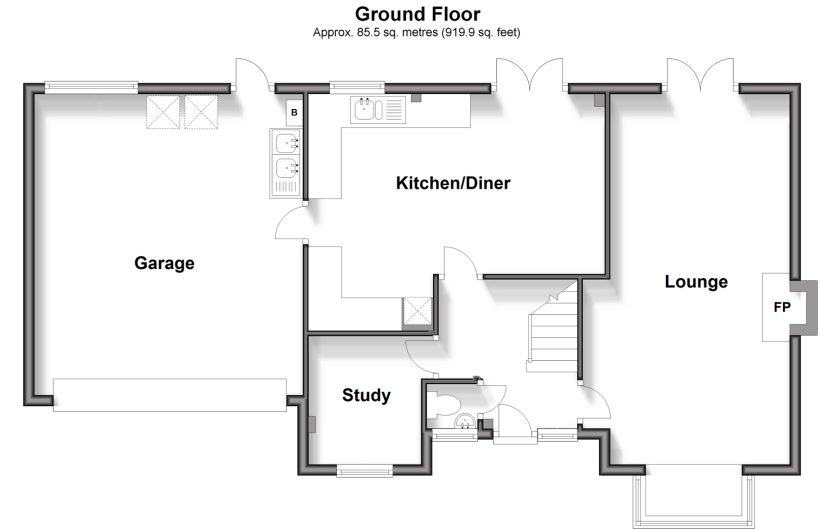
Bathroom: 8'1 x 4'9 (2.47m x 1.45m)

OUTSIDE

Double Garage: 18'4 x 16'0 (5.59m x 4.88m)

Off Road Parking

Front and Rear Garden



Call Crowborough - 01892 613361 ■ cubittandwest.co.uk

- Legal advice should be taken to verify fixtures/fittings, planning, alterations and/or lease details
- Appliances & services are untested, dimensions are approximate and floor plans are not to scale
- Through a Homewise Home For Life Plan people aged 60+ can secure this property for up to 59% less, by purchasing a Lifetime Lease.



24205314/20240503/JF/JF