



**Price**  
**£560,000**

**Freehold**

3x  2x  2x 

**The Mews, Fielden Road,  
Crowborough, East  
Sussex, TN6**

**cubitt & west**  
Helping you move forwards





## Main features

- Set within the sought after Crowborough Warren
- Spacious, bright and airy double aspect lounge
- Separate formal dining room
- Stylish modern kitchen
- Off road parking and stunning gardens

## Accommodation

### GROUND FLOOR

Entrance Hall

Lounge: 17'7 x 9'8 (5.36m x 2.95m)

Kitchen: 10'3 x 7'10 (3.13m x 2.39m)

Dining Room: 11'8 x 11'8 (3.56m x 3.56m)

Cloakroom: 5'7 x 2'11 (1.70m x 0.89m)

### FIRST FLOOR

Landing

Bathroom: 8'5 x 6'4 (2.57m x 1.93m)

Bedroom 1: 12'1 x 11'3 (3.69m x 3.43m)

En-Suite Shower Room: 10'0 x 3'2 (3.05m x 0.97m)

Bedroom 2: 12'0 x 9'4 (3.66m x 2.85m)

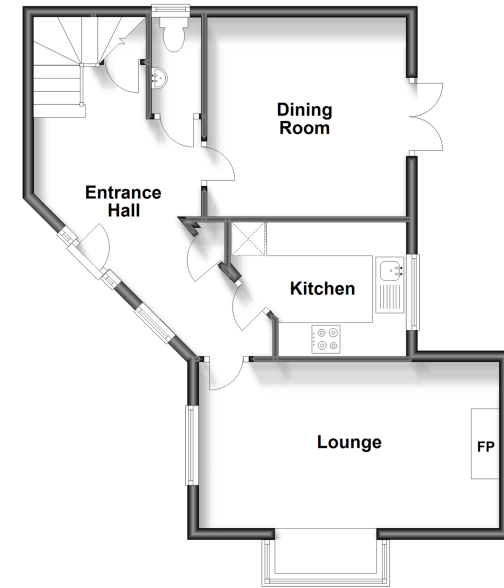
Bedroom 3: 7'8 x 7'1 (2.34m x 2.16m)

### OUTSIDE

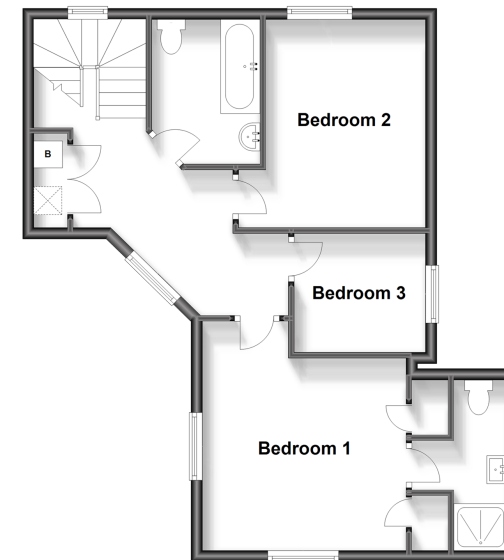
Off Road Parking

Rear Gardens

**Ground Floor**  
Approx. 53.0 sq. metres (570.8 sq. feet)



**First Floor**  
Approx. 54.5 sq. metres (586.2 sq. feet)



**Call Crowborough - 01892 613361 ■ cubittandwest.co.uk**

- Legal advice should be taken to verify fixtures/fittings, planning, alterations and/or lease details
- Appliances & services are untested, dimensions are approximate and floor plans are not to scale



24205351/20240509/JTA/JF