



Price
£500,000

Freehold

4x  1x  2x 

**St. John's Road,
Crowborough, East
Sussex, TN6**

cubitt & west
Helping you move forwards



Main features

- Generously extended home in a premier location
- Lovely lounge with feature fireplace and log burner
- Lounge opens into garden room
- Formal dining room
- Impressive views from some bedrooms

Accommodation

GROUND FLOOR

Porch
Hall
Dining Room: 12'6 x 10'1 (3.81m x 3.08m)
Lounge: 13'1 x 12'7 (3.99m x 3.84m)
Garden Room : 13'6 x 7'3 (4.12m x 2.21m)
Kitchen: 17'7 x 7'4 (5.36m x 2.24m)
Utility Room: 12'11 x 6'5 (3.94m x 1.96m)
Cloakroom

FIRST FLOOR

Landing
Bedroom 1: 11'4 x 10'11 (3.46m x 3.33m)
Bedroom 3: 11'2 x 9'2 (3.41m x 2.80m)
Bedroom 4: 9'6 x 8'4 (2.90m x 2.54m)
Bathroom: 9'9 x 5'7 (2.97m x 1.70m)

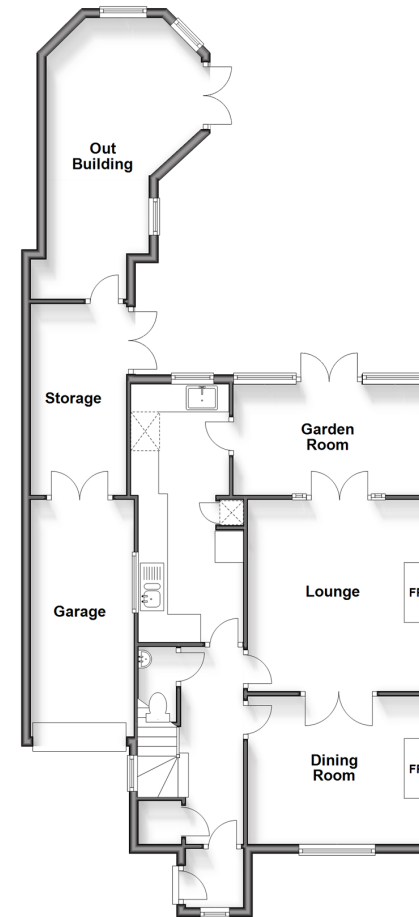
SECOND FLOOR

Bedroom 2: 13'7 x 13'2 (4.14m x 4.02m)

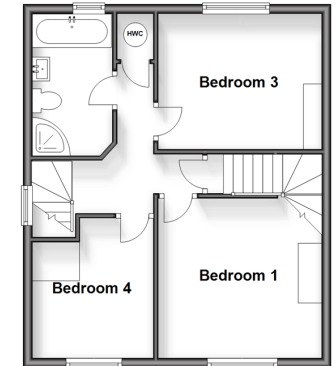
OUTSIDE

Garage: 16'5 x 6'9 (5.01m x 2.06m)
Off Road Parking
Rear Garden
Storage: 9'7 x 7'3 (2.92m x 2.21m)
Out Building: 19'6 x 10'9 (5.95m x 3.28m)
Summer House

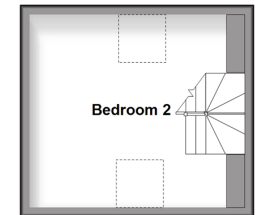
Ground Floor
Approx. 96.3 sq. metres (1036.2 sq. feet)



First Floor
Approx. 44.2 sq. metres (475.7 sq. feet)



Second Floor
Approx. 18.4 sq. metres (198.4 sq. feet)



Call Crowborough - 01892 613361 ■ cubittandwest.co.uk

- Legal advice should be taken to verify fixtures/fittings, planning, alterations and/or lease details
- Appliances & services are untested, dimensions are approximate and floor plans are not to scale



24205597/20240221/MC/JF