



**Guide Price**  
**£800,000**

**Freehold**

5x  2x  3x 

**Innhams Wood,  
Crowborough, East  
Sussex, TN6**

**OVER 60?**

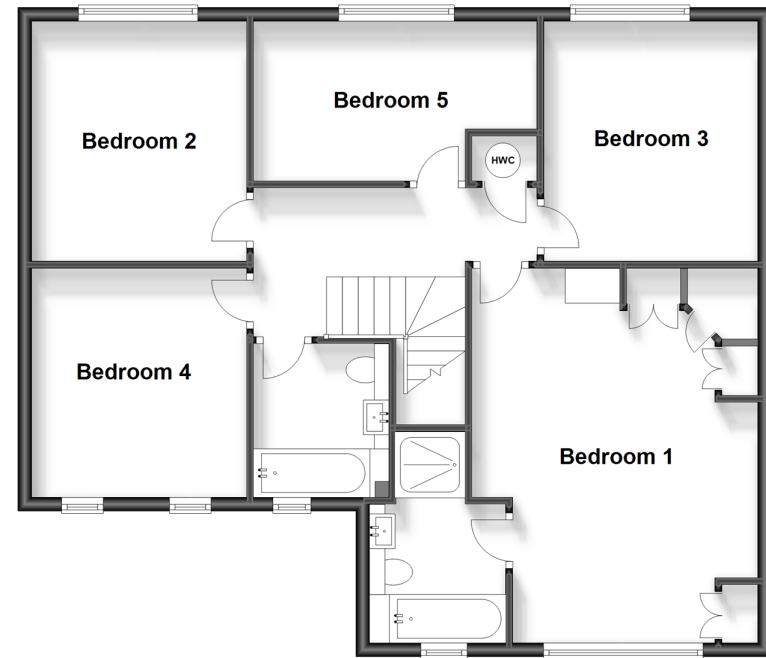
Secure this property  
for up to **59% less!**

**cubitt & west**  
Helping you move forwards

**Ground Floor**  
Approx. 111.2 sq. metres (1197.4 sq. feet)



**First Floor**  
Approx. 83.6 sq. metres (899.5 sq. feet)



## Accommodation

### GROUND FLOOR

- Porch
- Hallway: 17'8 x 10'1 (5.39m x 3.08m)
- Lounge: 18'2 x 13'5 (5.54m x 4.09m)
- Dining Room: 13'5 x 10'9 (4.09m x 3.28m)
- Cloakroom
- Study/Playroom: 14'10 x 9'4 (4.52m x 2.85m)
- Kitchen/Breakfast Room: 15'0 x 13'0 (4.58m x 3.97m)
- Utility Room
- Conservatory: 12'5 x 10'11 (3.79m x 3.33m)

### FIRST FLOOR

- Landing
- Bedroom 1: 17'7 x 13'7 (5.36m x 4.14m)
- En-suite Bathroom
- Bedroom 2: 11'4 x 10'2 (3.46m x 3.10m)
- Bedroom 3: 10'9 x 10'1 (3.28m x 3.08m)
- Bedroom 4: 11'4 x 10'1 (3.46m x 3.08m)
- Bedroom 5: 13'6 x 7'8 (4.12m x 2.34m)
- Bathroom

### OUTSIDE

- Front & Rear Gardens
- Off-Road Parking
- Store



## Main features

- Idyllic setting
- Air conditioning units in 5 rooms
- Beautiful conservatory overlooking the glorious garden
- Stylish kitchen/breakfast room and separate utility room
- En-suite shower room & separate bathroom
- Sprawling garden

## Nearest Schools

Primary Schools: St John's C of E Primary 0.3 miles, St Mary's Catholic Primary 1.0 miles, Sir Henry Fermor C of E Primary 1.0 miles  
Secondary Schools: Grove Park School 0.9 miles, Beacon Community College 1.1 miles, Mayfield School 5.6 miles

## Transport Information

Train Stations: Crowborough 1.9 miles, Buxted 5.4 miles, Uckfield 7.3 miles

## Address

Innhams Wood, Crowborough, East Sussex, TN6

## Directions

For directions to this property please contact us.



**cubitt&west**  
Helping you move forwards

Call Crowborough Branch 01892 613361 ■ [cubittandwest.co.uk](https://www.cubittandwest.co.uk)



■ Legal advice should be taken to verify fixtures/fittings, planning, alterations and/or lease details ■ Appliances & services are untested, dimensions are approximate and floor plans are not to scale  
■ Through a Homewise Home For Life Plan people aged 60+ can secure this property for up to 59% less, by purchasing a Lifetime Lease.

EPC RATING

CURRENT: C(73) POTENTIAL: C(80)

24200099/20240325/JF/JF