



Price

£650,000

Freehold

4x  2x  3x 

**Crowborough Hill,
Crowborough, East
Sussex, TN6**

cubitt&west
Helping you move forwards

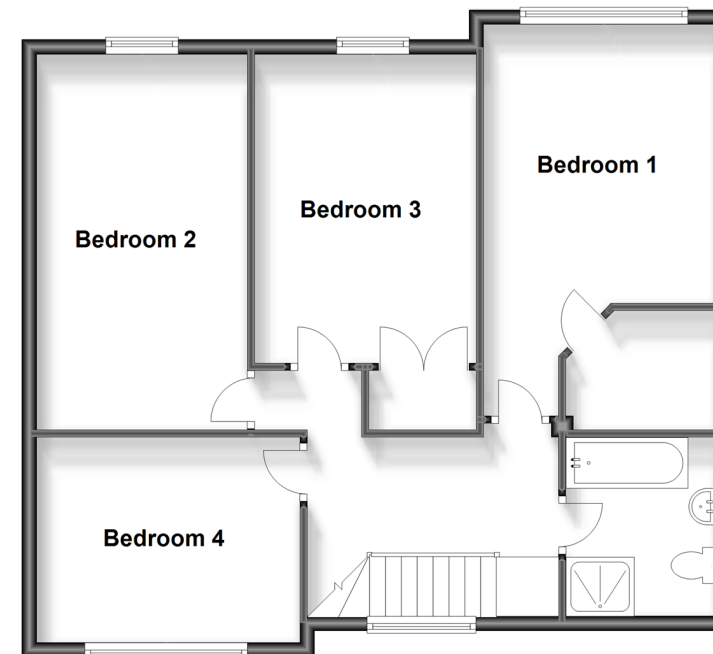
Ground Floor

Approx. 93.2 sq. metres (1003.3 sq. feet)



First Floor

Approx. 76.3 sq. metres (821.6 sq. feet)



Accommodation

GROUND FLOOR

Hall: 11'3 x 7'6 (3.43m x 2.29m)
 Lounge: 18'6 x 9'11 (5.64m x 3.02m)
 Family Area: 20'9 x 9'0 (6.33m x 2.75m)
 Dining Area: 9'8 x 8'11 (2.95m x 2.72m)
 Kitchen/Breakfast Room: 20'11 x 10'6 (6.38m x 3.20m)
 Shower Room: 6'9 x 5'5 (2.06m x 1.65m)

FIRST FLOOR

Landing
 Bedroom 1: 12'7 x 10'9 (3.84m x 3.28m)
 Walk In Wardrobe: 7'0 x 5'4 (2.14m x 1.63m)
 Bedroom 2: 17'6 x 9'11 (5.34m x 3.02m)
 Bedroom 3: 14'0 x 9'8 (4.27m x 2.95m)
 Bedroom 4: 11'10 x 9'1 (3.61m x 2.77m)
 Bathroom: 8'7 x 6'9 (2.62m x 2.06m)

OUTSIDE

Garage
 Off Street Parking
 Front and Rear Garden



Main features

- Tastefully extended home in good decorative order
- Lounge with inset feature fireplace
- Generous kitchen/breakfast room
- Walk in wardrobe to bedroom 1
- Downstairs shower room and 1st floor family bathroom



Nearest Schools

Primary Schools: Sir Henry Fermor C of E Primary 0.7 miles, St Mary's Catholic Primary 0.9 miles, Herne Junior School 1.4 miles
Secondary Schools: Beacon Community College 0.7 miles
Further Education: Beacon Community College 0.7 miles

Transport Information

Train Stations: Crowborough 0.7 miles, Eridge 3.0 miles, Buxted 6.4 miles

Address

Crowborough Hill, Crowborough, East Sussex, TN6

Directions

For directions to this property please contact us.





cubitt&west
Helping you move forwards

Call Crowborough Branch 01892 613361 ■ cubittandwest.co.uk



■ Legal advice should be taken to verify fixtures/fittings, planning, alterations and/or lease details ■ Appliances & services are untested, dimensions are approximate and floor plans are not to scale



24205592/20240123/JF/JF