



**Price**  
**£575,000**

**Freehold**

4x  2x  1x 

**London Road,  
Crowborough, East  
Sussex, TN6**

**OVER 60?**

Secure this property  
for up to **59% less!**

**cubitt&west**  
Helping you move forwards





## Main features

- An impressive home in a desirable position/location
- Generous bright and airy double aspect lounge
- Stylish kitchen/diner
- En-suite shower room to main bedroom
- Beautiful, generous rear garden

## Accommodation

### GROUND FLOOR

Porch

Hall: 18'3 x 6'1 (5.57m x 1.86m)

Lounge: 15'8 x 14'7 (4.78m x 4.45m)

Kitchen/Diner: 24'5 x 9'1 (7.45m x 2.77m)

Cloakroom: 5'6 x 2'9 (1.68m x 0.84m)

### FIRST FLOOR

Landing

Bedroom 1: 14'7 x 11'9 (4.45m x 3.58m)

En-Suite Shower Room: 8'4 x 4'7 (2.54m x 1.40m)

Bedroom 2: 12'4 x 9'11 (3.76m x 3.02m)

Bedroom 3: 12'3 x 9'0 (3.74m x 2.75m)

Bedroom 4: 12'0 x 11'8 (3.66m x 3.56m)

Shower Room: 6'5 x 4'11 (1.96m x 1.50m)

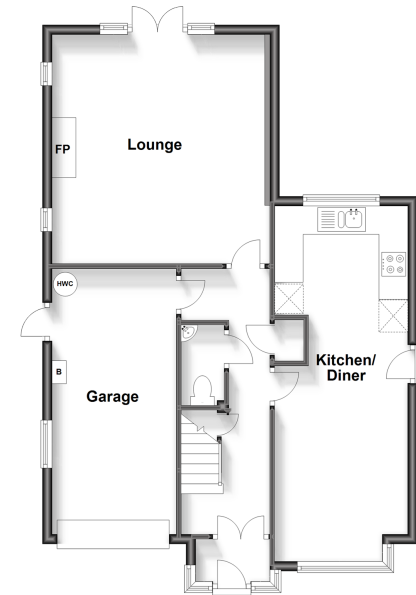
### OUTSIDE

Garage: 18'1 x 8'1 (5.52m x 2.47m)

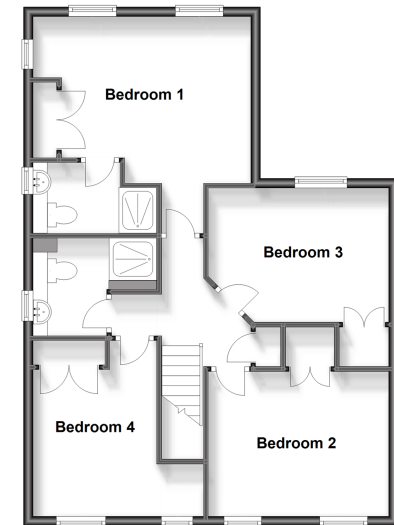
Off Road Parking

Rear Garden

**Ground Floor**  
Approx. 70.2 sq. metres (755.5 sq. feet)



**First Floor**  
Approx. 67.3 sq. metres (724.6 sq. feet)



**Call Crowborough - 01892 613361 ■ cubittandwest.co.uk**

- Legal advice should be taken to verify fixtures/fittings, planning, alterations and/or lease details
- Appliances & services are untested, dimensions are approximate and floor plans are not to scale
- Through a Homewise Home For Life Plan people aged 60+ can secure this property for up to 59% less, by purchasing a Lifetime Lease.



24205586/20231017/JF/JF