



Price

£100,000

Leasehold

1x  1x  1x 

**Martlets Court,
Montargis Way,
Crowborough, East
Sussex, TN6**

cubitt&west
Helping you move forwards



Main features

- Top floor, Warden assisted retirement apartment
- Upgraded approx 6 years ago to a very high standard
- Stylish modern Kitchen and Bathroom
- Spacious bright and airy Lounge and generous Bedroom

Accommodation

Entrance Hall

Lounge: 15'1 x 11'0 (4.60m x 3.36m)

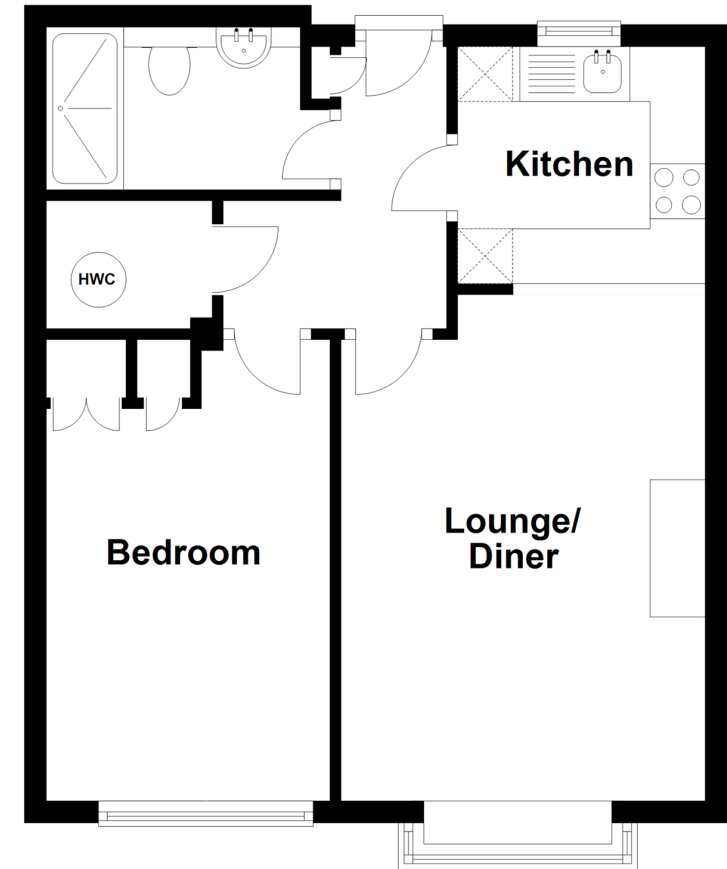
Kitchen: 7'8 x 7'4 (2.34m x 2.24m)

Bedroom: 13'4 x 8'4 (4.07m x 2.54m)

Bathroom: 8'5 x 4'10 (2.57m x 1.47m)

First Floor

Approx. 41.9 sq. metres (451.0 sq. feet)



Call Crowborough - 01892 613361 ■ cubittandwest.co.uk

- Legal advice should be taken to verify fixtures/fittings, planning, alterations and/or lease details
- Appliances & services are untested, dimensions are approximate and floor plans are not to scale



24205066/20210308/JF/JF