



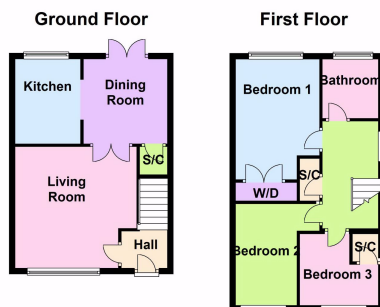
**HENDERSON
CONNELLAN**
ESTATE AGENTS

Timson Close, Market Harborough

£1,100PCM (Deposit: £1,100)

🛏 3 🚿 1 🛋 2





Tax Band: B Furnished: Unfurnished

This three bed end of terrace house is located in the popular North side of Market Harborough not far from the town centre and local schools. The spacious living room provides access to the separate dining room boasting UPVC double glazed French doors opening onto the rear garden. The fully fitted kitchen has a machine machine and space for a fridge-freezer. The first floor leads to the bathroom with shower over the bath and three bedrooms with the master benefiting from built in wardrobes. The rear garden is well landscaped and low maintenance and the front offers a driveway and parking for two cars. No Pets or Smokers. Council Tax band B



63 High Street, Market Harborough,
Leicestershire, LE16 7AF

Disclaimer: These particulars do not form part of any offer or contract and should not be relied upon as statements or representations of fact. Any areas, measurements of distances are approximate. The text, photographs and plans are for guidance only and are not necessarily comprehensive.

