

Measurements

Living/Dining Room
12'1 x 17'1 (3.68m x 5.21m)

Kitchen 11'3 x 20'
(3.43m x 6.10m)

Utility Room 5'2 x 8'3
(1.57m x 2.51m)

Study 7'8 x 9'5
(2.34m x 2.87m)

Guest Cloakroom 5'2 x 5'
(1.57m x 1.52m)

Bedroom One 12'1 x 12'9
(3.68m x 3.89m)

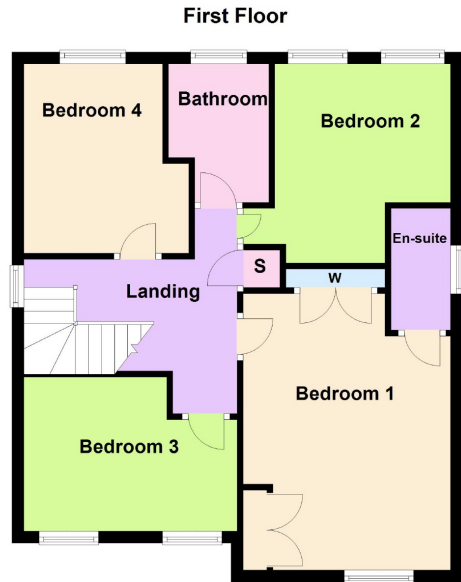
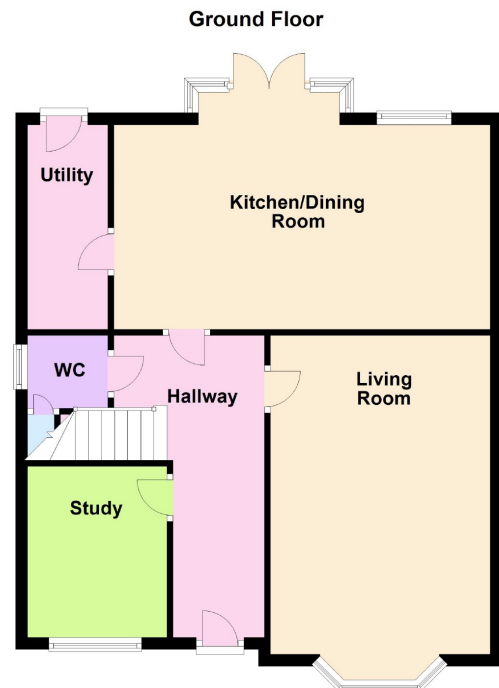
En Suite 4'6 x 7'1
(1.37m x 2.16m)

Bedroom Two 9'8 x 10'2
(2.95m x 3.10m)

Bedroom Three 9'5 x 13'4
(2.87m x 4.06m)

Bedroom Four 9'5 x 10'1
(2.87m x 3.07m)

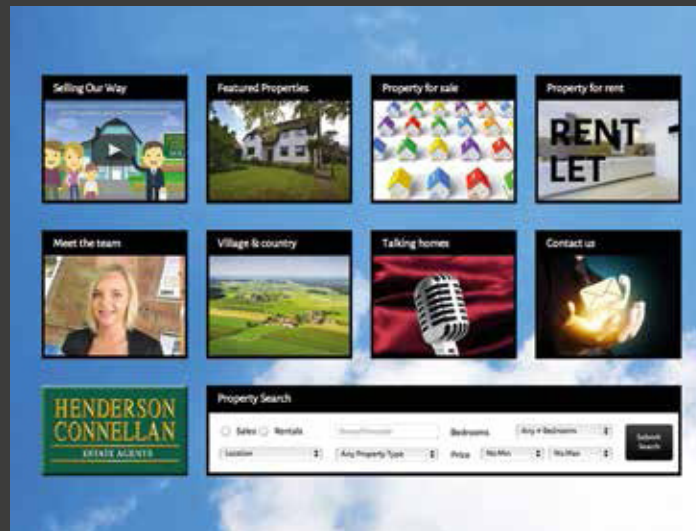
Bathroom 5'6 x 7'7
(1.68m x 2.31m)



Disclaimer: These particulars do not form part of any offer or contract and should not be relied upon as statements or representations of fact. Any areas, measurements of distances are approximate. The text, photographs and plans are for guidance only and are not necessarily comprehensive.



15-16 Market Place, Kettering, Northamptonshire NN16 0AJ
Sales (01536) 417888
email: ketteringsales@hendersonconnellan.co.uk
Lettings and Property Management (01536) 416555
email: bestlets@hendersonconnellan.co.uk



Bold & Beautiful



28 Kirby Street, Kettering, NN15 5GR

Offers In Excess Of £415,000



Gardens

- Driveway with tandem parking for 2 vehicles, leading to a single garage with up and over door, power, lighting and double doors accessing the garden area
- The garden is laid to lawn with two terrace areas, one covered by pergola with space for pizza oven (available by separate negotiation) the second has sail covering (available by separate negotiation). Large garden shed and secure gated access to the driveway.



Bold & Beautiful

A fantastic opportunity to purchase an exquisitely presented four bedroom detached home on the popular Bertone Manor. Each room has its own unique charm and offers contemporary decor throughout. The striking entrance hall leads to the living room with bay window, a useful study or playroom and the fabulous kitchen/dining/family room which includes integrated appliances and French doors leading to the garden. Upstairs you will find four double bedrooms, with the master bedroom benefitting from an ensuite shower room. The luxurious main bathroom completes the first floor. Outside, there is tandem parking for two vehicles and a single garage. The private garden is neatly presented and includes two terraced areas, one with covered pergola. EPC :B





Property highlights

- To the first floor you will find four double bedrooms, including the master bedroom which enjoys fitted wardrobes and an ensuite shower room
- Main bathroom with panel enclosed bath, separate mains connected shower, wash hand basin, WC and heated towel rail



Property highlights

- Exquisitely presented four bedroom detached home located on Bertone Manor
- Entrance hall with tiled herringbone style flooring with doors to rooms and stairs rising to first floor
- Guest cloakroom with door to under stairs storage
- Living room, a generous room with bay window to front elevation
- Study/ playroom - a versatile space offering a multitude of uses
- Kitchen/ Dining / Family room to include a range of cream eye and base level units with timber effect roll top work surfaces with 1.5 stainless steel sink and drain with monobloc tap. Various integrated appliances to include; fridge freezer, double oven and grill, six - ring gas hob with extractor over, and dishwasher. Generous dining area, breakfast bar and French doors into bay
- Utility room - to include a continuation of the cream eye and base level units, integrated washing machine, and space for tumble dryer (not included). Door to garden

