



**HENDERSON
CONNELLAN**
ESTATE AGENTS

Peveril Street, Kettering, NN15

"Family Living"

🛏 4 🍳 2 🚿 2



"Family Living"

This impressive four-bedroom detached home offers flexible family living on this desirable development in Barton Seagrave close to local amenities, schools and with Kettering town centre and mainline railway station just a short distance away. The interior is well-presented and comprises entrance hallway, guest cloakroom, kitchen/dining room complimented by utility cupboard in the hallway, flexible reception room which would make a formal dining room or playroom as required and a sizeable dual aspect living room. Upstairs you will find the bathroom and four bedrooms, three of which are double in size and the main room with en-suite. Outside the driveway provides off road parking in front of the garage and the rear garden has been landscaped with porcelain patio and neatly laid lawns. A lovely family home. Call us to book a viewing today.

Kitchen/Dining Room - 3.38m x 4.01m (11'1" x 13'2")

Dining/Play Room - 3m x 2.95m (9'10" x 9'8")

Living Room - 5m x 3.1m (16'5" x 10'2")

WC - 1.42m x 2.82m (4'8" x 9'3")

Bedroom 1 - 2.97m x 2.08m (9'9" x 6'10")

Ensuite - 1.98m x 0.97m (6'6" x 3'2")

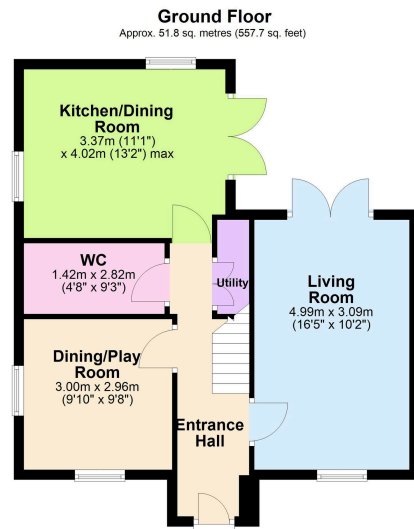
Bedroom 2 - 2.84m x 4.5m (9'4" x 14'9")

Bedroom 3 - 2.01m x 3.61m (6'7" x 11'10")

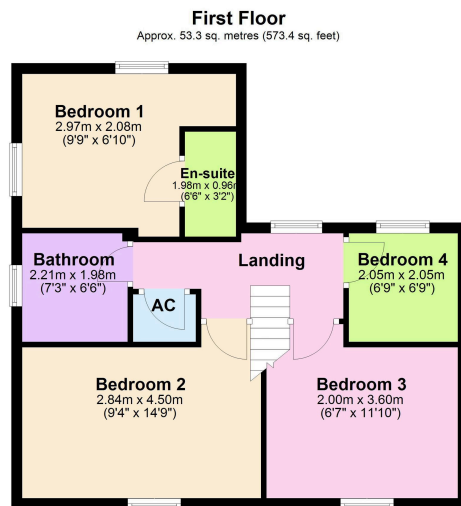
Bedroom 4 - 2.06m x 2.06m (6'9" x 6'9")

Bathroom - 2.21m x 1.98m (7'3" x 6'6")





Total area: approx. 105.1 sq. metres (1131.2 sq. feet)



- Detached Home
- Desirable Location
- Close to School / Amenities
- Private Gardens
- COUNCIL TAX: D
- Four Bedrooms
- Versatile Living Options
- En-suite to Main Bedroom
- Garage and Off Road Parking
- EPC RATING: B



Disclaimer: These particulars do not form part of any offer or contract and should not be relied upon as statements or representations of fact. Any areas, measurements of distances are approximate. The text, photographs and plans are for guidance only and are not necessarily comprehensive.

15-16 Market Place, Kettering,
Northamptonshire, NN16 0AJ

