



**HENDERSON
CONNELLAN**
ESTATE AGENTS

Summerfield Road, Kettering, NN15

"The Inside Story"

🛏 3 🚿 1 🛋 2



"The Inside Story"

This impressive bay fronted semi-detached home enjoys not only a stylish interior but an ultra-convenient location, the town centre, Wicksteed Park, the mainline railway and a variety of schools are a short walk away. The entrance hall offers useful storage and leads to a guest cloakroom, generous living room with decorative feature fireplace, the dining room is versatile ideal for use as study or snug and the cool white, designer kitchen/breakfast room is a great size, flooded with light from the roof window complete with integrated double oven, four ring gas hob and a dishwasher. Upstairs the stunning bathroom has a bath and separate shower enclosure and three bedrooms, two of which are double in size. Gas central heating with app control and UPVC double glazed windows completes the inside. Outside a private block paved driveway offers parking for two cars and the landscaped rear garden is arranged with easy care in mind. An outstanding home and garden!

Living Room - 4.19m x 3.61m (13'9" x 11'10")

Kitchen/Breakfast Room - 5.79m x 3.23m (19'0" x 10'7")

Dining Room - 3.3m x 2.46m (10'10" x 8'1")

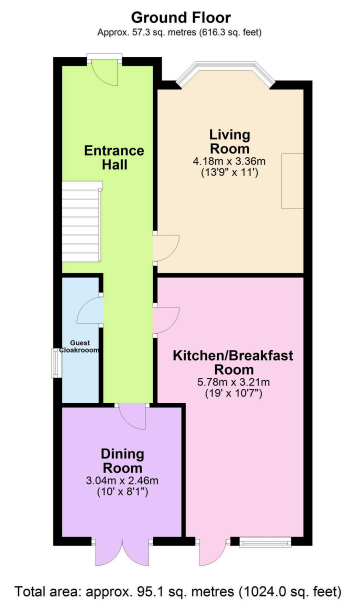
Bedroom 1 - 3.35m x 3.28m (11'0" x 10'9")

Bedroom 2 - 3.33m x 3.12m (10'11" x 10'3")

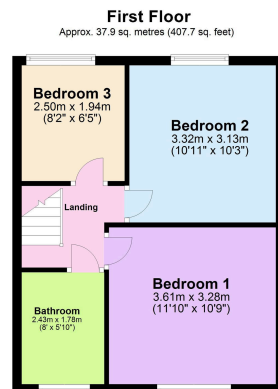
Bedroom 3 - 2.49m x 1.96m (8'2" x 6'5")

Bathroom - 2.44m x 1.78m (8'0" x 5'10")





Total area: approx. 95.1 sq. metres (1024.0 sq. feet)



- Semi Detached
- Three Bedrooms
- Guest Cloakroom
- Kitchen/Breakfast Room
- Driveway Parking For Two Cars
- Landscaped Rear Garden
- COUNCIL TAX: B
- EPC RATING : C



15-16 Market Place, Kettering,
Northamptonshire, NN16 0AJ

Disclaimer: These particulars do not form part of any offer or contract and should not be relied upon as statements or representations of fact. Any areas, measurements of distances are approximate. The text, photographs and plans are for guidance only and are not necessarily comprehensive.

