

## Station Road, Kettering, NN15 7HH

Offers Over £150,000

🛏 2 🚿 1 🚺 1



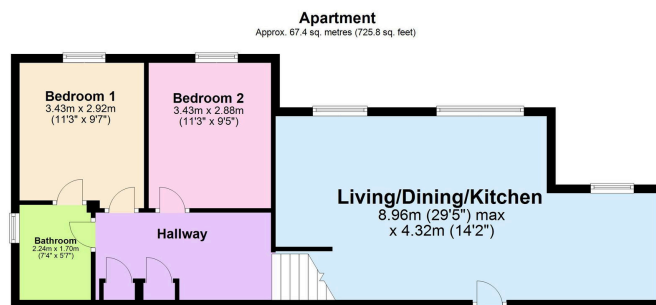
### "Design Matters"

This seriously impressive apartment occupies the second floor of this exclusive development with the added convenience of a lift. The Restaurant/Cultural Quarter and the mainline railway is literally a moments walk away connecting directly to St Pancras International in under an hour.

The innovative split level interior features a designer kitchen with integrated oven and hob flowing to the living/dining room, stairs lead down to a lower tier where there are two generous double bedrooms and a principal bathroom. Electric heating, double glazed windows, security entry system and allocated parking complete this exceptional apartment.

## Key Features

- Second Floor Apartment
- Electric Heating
- Lease- 125 Years from September 2003 (103 Unexpired)
- EPC RATING: C
- Town Centre
- Two Bedrooms
- Parking for One Car
- Service Charge Approx £1,200 per six months Ground rent £75 per six months
- COUNCIL TAX: B
- Lift



Total area: approx. 67.4 sq. metres (725.8 sq. feet)



15-16 Market Place, Kettering, Northamptonshire, NN16 0AJ