

Havelock Street, Kettering, NN16

"Heart Of The Town"

🛏 2 🚗 1 🛋 2



"Heart Of The Town"

deal for a first time buyer or investment property with NO CHAIN is this two-bedroom Victorian property located in Kettering, the town centre is a moments walk away as well as being within easy reach of Kettering General Hospital as well as the mainline railway. The property benefits from gas central heating, mostly double glazed windows and showcases entrance hallway, living/dining room with period cupboards, kitchen with useful under stairs storage. Upstairs there are two double bedrooms and a principal bathroom principal bedroom with period storage and dual aspect windows. Outside there is a private patio leading to a communal garden.

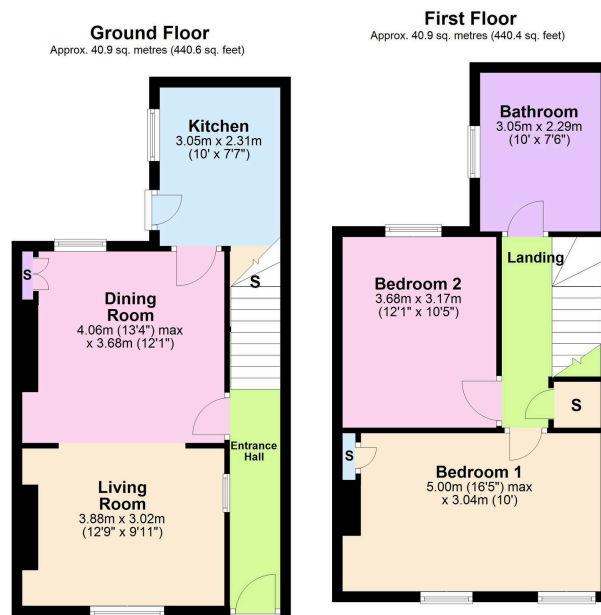


15-16 Market Place, Kettering, Northamptonshire, NN16 0AJ



Key Features

- Close to local amenities
- Heart of Kettering
- Gas central heating
- Victorian terraced home
- EPC RATING: D
- UPVC double glazing
- South facing garden
- Two double bedrooms
- NO CHAIN
- COUNCIL TAX: A



Total area: approx. 81.8 sq. metres (881.0 sq. feet)



15-16 Market Place, Kettering, Northamptonshire, NN16 0AJ

