



**HENDERSON
CONNELLAN**
ESTATE AGENTS

Lime Tree Mews, The Grove, The Kettering

"Garden Apartment"

🛏 2 🚿 1 🛋 1



"Garden Apartment"

This stunning ground floor apartment has access to its very own garden area, enabling you to enjoy the great outdoors as well as the stylish, high specification interior. The convenient location means a short walk takes you to the heart of the town as well as the Restaurant/Cultural Quarter and the mainline railway connecting with St Pancras International in under an hour! The designer, light filled interior includes an entrance hall, attractive doors lead to the generous living room, providing both living and dining options and the contemporary kitchen/breakfast has an integrated oven, induction hob and fridge/freezer. The two bedrooms are good sizes and the brand new shower room has a cool white suite. UPVC double glazed windows, security entry phone system and electric heating complete the inside. Outside the communal grounds are well kept with electric wrought iron gates leading to secure parking where there is space for one car as well as visitors' spaces. The ultimate urban lifestyle – all on one level! NO CHAIN

Living Room - 3.84m x 3.35m (12'7" x 11'0")

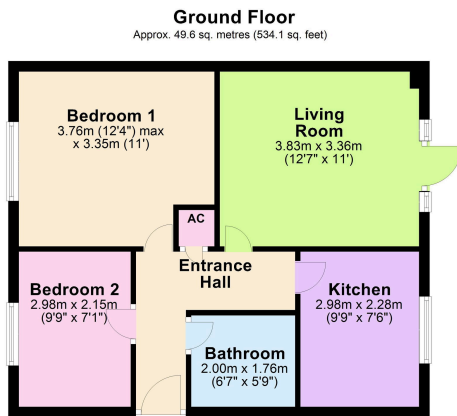
Kitchen - 2.97m x 2.29m (9'9" x 7'6")

Bedroom 1 - 3.76m x 3.35m (12'4" x 11'0")

Bedroom 2 - 2.97m x 2.16m (9'9" x 7'1")

Bathroom - 2.01m x 1.75m (6'7" x 5'9")





Total area: approx. 49.6 sq. metres (534.1 sq. feet)

- NO CHAIN
- Ground floor apartment
- Newly refurbished with stunning interior
- Brand new Kitchen and Shower Room
- Two Bedrooms
- Electric heating & UPVC double glazed windows
- Service charge: £1300 PA Ground rent: NA
- Leasehold 999 years from 1987 - 961 years unexpired
- Council tax: B
- EPC Rating: PENDING



Disclaimer: These particulars do not form part of any offer or contract and should not be relied upon as statements or representations of fact. Any areas, measurements of distances are approximate. The text, photographs and plans are for guidance only and are not necessarily comprehensive.

15-16 Market Place, Kettering,
Northamptonshire, NN16 0AJ

