



**HENDERSON  
CONNELLAN**  
ESTATE AGENTS

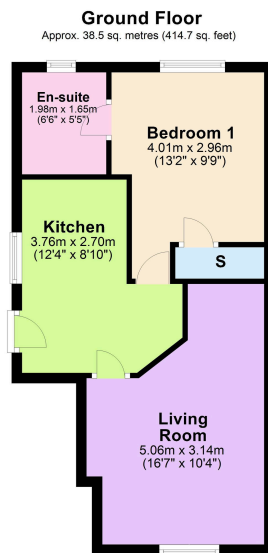


85a Littlewood Street, Rothwell

£850PCM (Deposit: £850)

🛏 1 🪑 1 🛋 1





Total area: approx. 38.5 sq. metres (414.7 sq. feet)



Tax Band: A Furnished: Unfurnished

Positioned in the thriving market town of Rothwell, this well-presented maisonette offers contemporary living with excellent connectivity via the A14. The property combines practical living spaces with modern amenities, featuring a fitted Kitchen with gas cooking facilities and a spacious Living Room perfect for relaxation. The accommodation includes a well-appointed double bedroom complete with storage solutions and private ensuite facilities. The property benefits from a low-maintenance paved patio garden, ideal for outdoor enjoyment, and the convenience of off-road parking. Its location provides easy access to local amenities while maintaining a peaceful residential setting.



15-16 Market Place, Kettering, Northamptonshire, NN16 0AJ

