



**HENDERSON  
CONNELLAN**  
ESTATE AGENTS



Ftizwilliam Drive,Barton Seagrave NN15

"A Place For Everything"

🛏 5 🍳 3 🛋 4





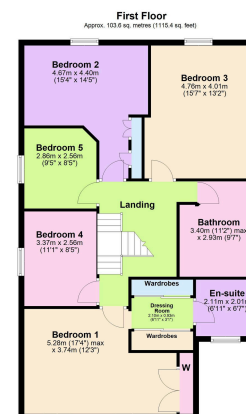
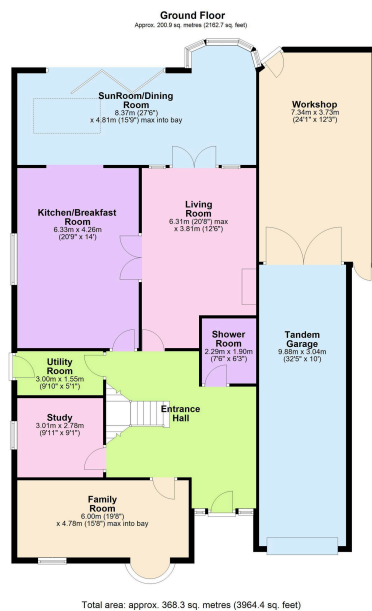
## "A Place For Everything"

This outstanding five bedroom detached property has been greatly enhanced to create a versatile layout perfect for family living. Located on this quiet cul-de-sac in Barton Seagrave close to local amenities and schools and also with Kettering town centre and mainline railway station just a short distance away. The property occupies an outstanding plot which enjoys a leafy backdrop with the spinney behind. The interior is immaculately presented and comprises palatial entrance hallway, downstairs shower room, living room with gorgeous fireplace, kitchen/breakfast room which flows to a fabulous dining/sun room which is the real hub of the home with ceiling lanterns and log burner. The kitchen is further complimented by the utility room and a bay fronted family room and study completes the ground floor. Upstairs you will find the family bathroom and five double bedrooms, the master with dressing area and ensuite. Outside the block paved driveway provides off road parking and there is both a timber garage to the front and tandem garage to the side leading back to a workshop area behind offering substantial space. The rear garden has been landscaped with entertaining in mind, there is a garden bar and substantial patio area with various seating zones along with other outbuildings and the beautiful green outlook. A property that must be viewed!





- Outstanding plot and outlook
- Desirable location
- Five double bedrooms
- Huge garage and workshop
- Beautiful gardens
- Versatile layout
- Driveway
- Open plan living
- EPC RATING: C
- COUNCIL TAX: F



Disclaimer: These particulars do not form part of any offer or contract and should not be relied upon as statements or representations of fact. Any areas, measurements of distances are approximate. The text, photographs and plans are for guidance only and are not necessarily comprehensive.

15-16 Market Place, Kettering,  
Northamptonshire, NN16 0AJ

