



**HENDERSON  
CONNELLAN**  
ESTATE AGENTS



## Chase View Road, Geddington NN14

"Room to Grow"

3 1 2





## "Room to Grow"

Occupying an impressive corner plot, with wrap around garden, this end of mews home has so much potential. Geddington enjoys a respected primary School, village pub, coffee shop, picturesque church, the historic Queen Eleanor Cross and some stunning countryside walks. The generous plot features a private driveway, single garage and well-kept gardens all of which offer huge scope to extend (subject to planning permission). The interior is well presented and benefits from UPVC double glazed windows and gas central heating to include an entrance hall, living room with feature fireplace opening to a dining room, versatile conservatory, well appointed kitchen and useful utility room. Upstairs the three bedrooms are all good sizes and the bathroom with white suite and a separate shower enclosure. A great home, plot, and setting!

**Living Room** - 3.63m x 3.33m (11'11" x 10'11")

**Dining Room** - 2.64m x 2.51m (8'8" x 8'3")

**Kitchen** - 3.68m x 2.51m (12'1" x 8'3")

**Conservatory** - 2.62m x 2.24m (8'7" x 7'4")

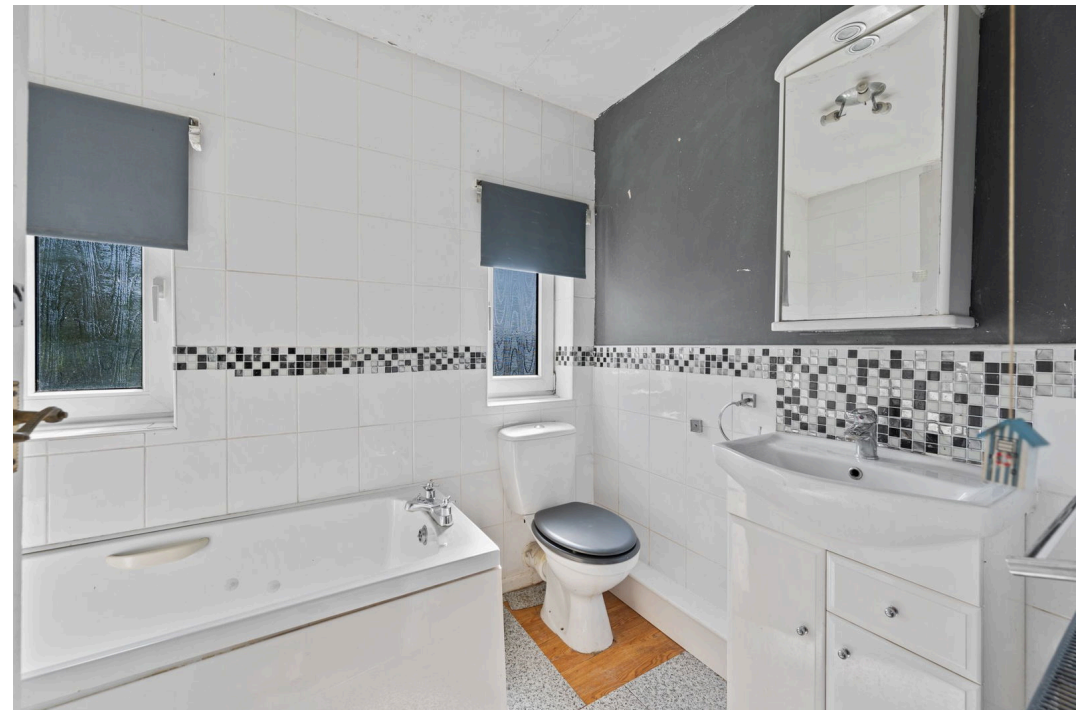
**Utility Room** - 2.62m x 1.68m (8'7" x 5'6")

**Bedroom One** - 4.27m x 3.1m (14'0" x 10'2")

**Bedroom Two** - 3.99m x 3.12m (13'1" x 10'3")

**Bedroom Three** - 3.35m x 2.21m (11'0" x 7'3")

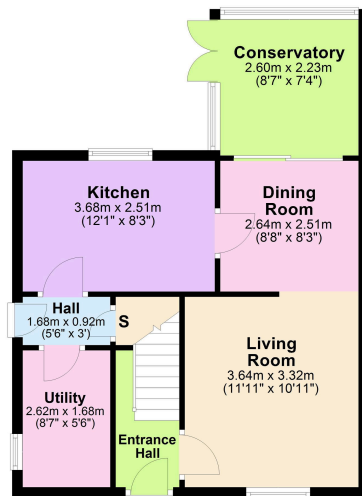
**Bathroom** - 2.49m x 1.7m (8'2" x 5'7")





- Village Location
- Three Bedrooms
- Garage
- UPVC Double Glazing
- EPC RATING: PENDING
- End Of Mews
- Wrap-Around Plot
- Close to local amenities
- Gas Central Heating
- COUNCIL TAX: B

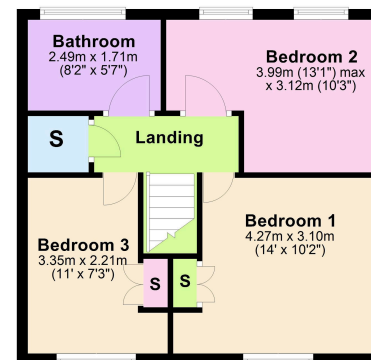
**Ground Floor**  
Approx. 47.3 sq. metres (509.0 sq. feet)



Total area: approx. 88.0 sq. metres (947.2 sq. feet)

**First Floor**

Approx. 40.7 sq. metres (438.2 sq. feet)



Disclaimer: These particulars do not form part of any offer or contract and should not be relied upon as statements or representations of fact. Any areas, measurements of distances are approximate. The text, photographs and plans are for guidance only and are not necessarily comprehensive.

15-16 Market Place, Kettering,  
Northamptonshire, NN16 0AJ

