



**HENDERSON  
CONNELLAN**  
ESTATE AGENTS



# The Bakery, High Street, Brigstock NN14

## "Character With A Contemporary Twist"

🛏 4 🍳 2 🛋 2





## "Character With A Contemporary Twist"

This absolutely stunning stone cottage known as "The Bakery" is deceptively large with truly epic proportions. The entrance hall has a grey slate style floor with low level lighting extending through to the lovely formal dining room. The living room has a cosy feel with wood burner; the sensational kitchen/breakfast room has tall ceilings and the original coal bread oven providing an insight to the history of the cottage. A utility room and well-appointed shower room complete the ground floor. Upstairs the split level landing is flooded with natural light and leads to four double bedrooms and a principal bathroom. The property has been greatly enhanced with gas central heating and the majority of the windows have been upgraded with bespoke sealed unit double glazed windows. Outside offers a surprise with a lovely cobbled courtyard garden with a spiral staircase leading up to an elevated decked area perfect for alfresco entertaining. The epitome of village life!

**Living Room** - 5.31m x 3.81m (17'5" x 12'6")

**Dining Room** - 4.22m x 3.78m (13'10" x 12'5")

**Utility Room** - 2.31m x 1.6m (7'7" x 5'3")

**Shower Room** - 2.21m x 1.65m (7'3" x 5'5")

**Kitchen/Breakfast Room** - 5.21m x 4.52m (17'1" x 14'10")

**Bedroom One** - 5.69m x 3.61m (18'8" x 11'10")

**Bedroom Two** - 4.09m x 3.4m (13'5" x 11'2")

**Bedroom Three** - 4.93m x 3.2m (16'2" x 10'6")

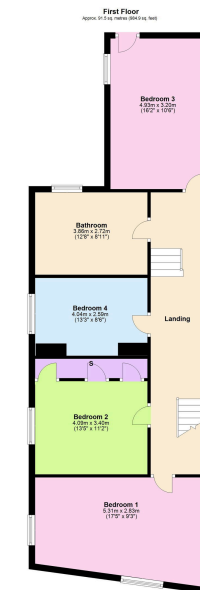
**Bedroom Four** - 4.04m x 2.59m (13'3" x 8'6")

**Bathroom** - 3.86m x 3.56m (12'8" x 11'8")





- Village Location
- Two Reception Rooms
- Courtyard Garden
- COUNCIL TAX: C
- Four Double Bedrooms
- Character Features
- Roof terrace
- EPC RATING : D



Disclaimer: These particulars do not form part of any offer or contract and should not be relied upon as statements or representations of fact. Any areas, measurements of distances are approximate. The text, photographs and plans are for guidance only and are not necessarily comprehensive.

15-16 Market Place, Kettering,  
Northamptonshire, NN16 0AJ

