



**HENDERSON
CONNELLAN**
ESTATE AGENTS

Heather Road, Kettering NN16

"Bloomin Marvellous"

2 1 1



"Bloomin Marvellous"

The front and rear gardens are full of spectacular colours when in bloom through out the year which adjoin this semi detached home occupying a lovely plot. The deep frontage features a foregarden, private driveway and single garage, the rear garden is laid to lawn with patio and fabulous Magnolia tree. The well presented interior benefits from gas central heating and UPVC double glazing to include an entrance porch, entrance hall, guest cloakroom, living room with feature fireplace, free flowing kitchen/dining room and utility room. Upstairs there is a walk in storage area, WC, shower room and two double bedrooms, the main bedroom with built in wardrobes. Shops, amenities, schools and park walks are nearby .

Living Room - 3.99m x 3.33m (13'1" x 10'11")

Kitchen/Breakfast Room - 5.82m x 2.72m (19'1" x 8'11")

Utility Room - 2.77m x 1.7m (9'1" x 5'7")

WC - 1.65m x 0.81m (5'5" x 2'8")

Bedroom 1 - 3.61m x 3.3m (11'10" x 10'10")

Bedroom 2 - 3.3m x 2.72m (10'10" x 8'11")

Shower Room - 2.18m x 1.68m (7'2" x 5'6")

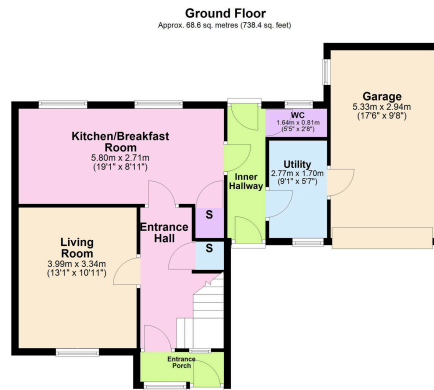
WC - 1.4m x 0.94m (4'7" x 3'1")

Garage - 5.33m x 2.95m (17'6" x 9'8")

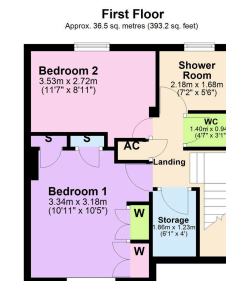




- Mostly UPVC double glazing and gas central heating
- Free flowing Kitchen/Dining Room
- Living Room with feature fireplace
- Utility and WC
- Two double Bedrooms
- Shower Room and separate WC
- Driveway, Garage and well kept gardens
- COUNCIL TAX: B
- EPC RATING: PENDING



Total area: approx. 105.1 sq. metres (1131.6 sq. feet)



15-16 Market Place, Kettering,
Northamptonshire, NN16 0AJ

Disclaimer: These particulars do not form part of any offer or contract and should not be relied upon as statements or representations of fact. Any areas, measurements of distances are approximate. The text, photographs and plans are for guidance only and are not necessarily comprehensive.

