

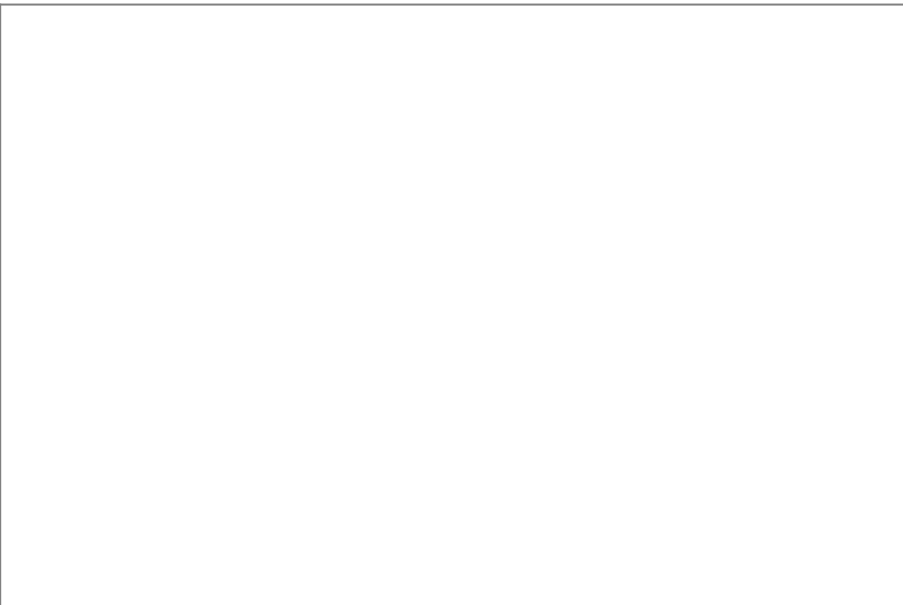
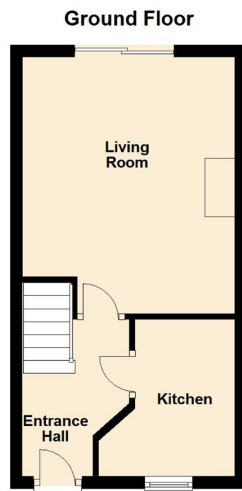


**HENDERSON
CONNELLAN**
ESTATE AGENTS

Merrivale Close, Kettering
£950PCM (Deposit: £950)

🛏 2 🍽 1 🛋 1



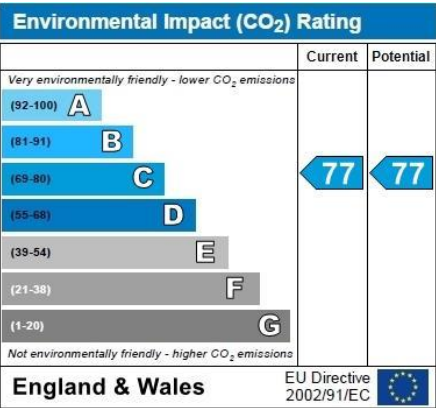
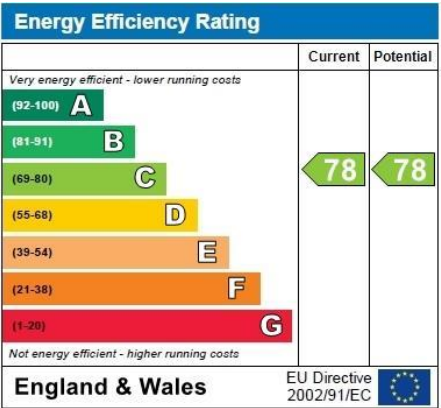


Tax Band: Furnished: Not Specified

This Life Surround yourself with all the creature comforts provided by this modern well appointed mews home benefiting from UPVC double glazed windows and gas central heating. The accommodation comprises fitted kitchen with integrated oven and hob, generous living room with sliding patio doors to the garden, two double bedrooms and a principal bathroom. Situated on the extremely sought after Leisure Village, this fabulous home enjoys allocated parking spaces as well as front and rear gardens. The home has been designed for the easy life. Available End May!

EPC - C

Council Tax: B



15-16 Market Place, Kettering, Northamptonshire, NN16 0AJ

