



**HENDERSON
CONNELLAN**
ESTATE AGENTS

Queen Street, Geddington NN14

"Rural Seclusion"

🛏 2 🍳 1 🚿 1



"Rural Seclusion"

Discreetly positioned in the heart of Geddington, this fabulous stone and red brick detached home is moments from scenic walks along the river, bridge and historic Queen Eleanor Cross, there is the pub and café perfect for a moments rest and relaxation. The stunning light filled interior benefits from gas central heating and sealed unit double glazed windows to include an entrance hall, oak interior doors lead to the guest cloakroom, the living room with period style radiators and double doors leading out to the garden and a fabulous, free flowing social kitchen/dining room with range cooker and integrated fridge, freezer and washing machine.

Upstairs the light filled landing has a walk-in cupboard and two fabulous double bedrooms, both with their own ensuites. Outside is arranged with easy care in mind, there is allocated parking for two cars and a lovely, secluded garden with patio, decking and artificial lawn. A lovely home and setting.

Living Room - 5.26m x 4.39m (17'3" x 14'5")

Kitchen/Dining Room - 4.09m x 3.81m (13'5" x 12'6")

Guest WC - 1.75m x 1.07m (5'9" x 3'6")

Bedroom One - 4.39m x 3.58m (14'5" x 11'9")

Ensuite - 2.41m x 2.01m (7'11" x 6'7")

Bedroom Two - 3.91m x 3.84m (12'10" x 12'7")

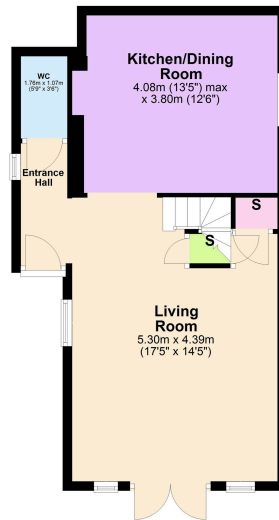
Ensuite - 2.77m x 1.68m (9'1" x 5'6")





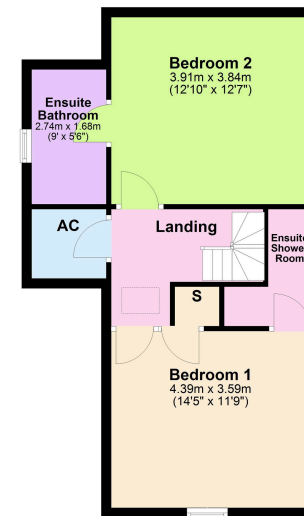
- Detached Home
- Lovely Village Setting
- Spacious Interior
- Gas Central Heating
- COUNCIL TAX: C
- Two Double Bedrooms
- Sealed Unit Double Glazed windows
- Low Maintenance Garden
- EPC RATING: C

Ground Floor
Approx. 49.4 sq. metres (532.0 sq. feet)



Total area: approx. 99.4 sq. metres (1070.2 sq. feet)

Approx. 50.0 sq. metres (538.1 sq. feet)



Disclaimer: These particulars do not form part of any offer or contract and should not be relied upon as statements or representations of fact. Any areas, measurements of distances are approximate. The text, photographs and plans are for guidance only and are not necessarily comprehensive.

15-16 Market Place, Kettering,
Northamptonshire, NN16 0AJ

