



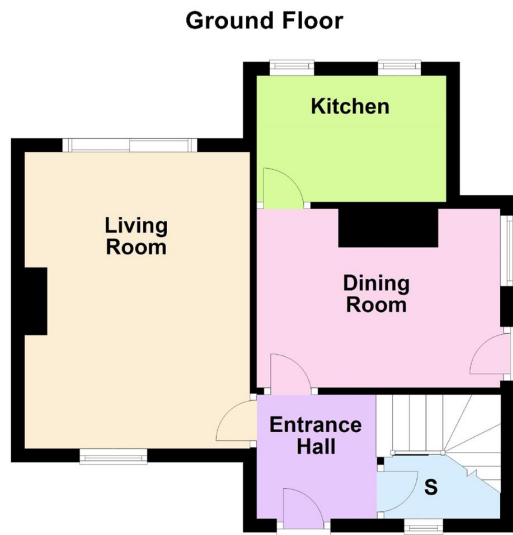
**HENDERSON
CONNELLAN**
ESTATE AGENTS

Wellingborough Road, Broughton

£1,100PCM (Deposit: £1,100)

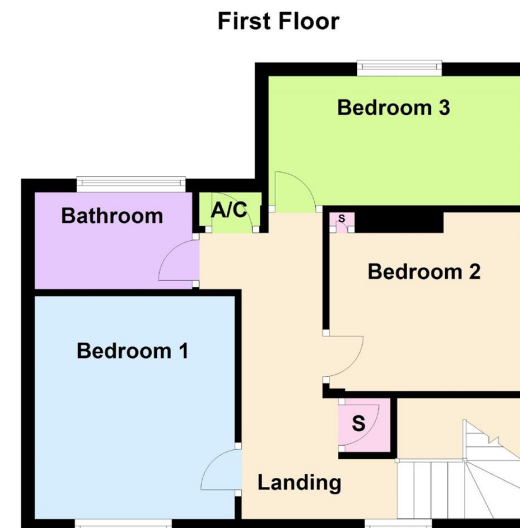
🛏 3 🍳 1 🛋 2





Tax Band: Furnished: Unfurnished

You will be truly impressed once you've seen the plot of this deceptively large and well-presented semi-detached home. Situated in the popular Northamptonshire village of Broughton, this fabulous home has been recently redecorated and boasts generously sized accommodation throughout comprising entrance vestibule, new fitted kitchen, generous living room with patio doors overlooking rear garden, formal dining room, and large under stair storage space. In addition, expect to see a principal bathroom and three bedrooms, two of which are double in size. The property further benefits from a driveway providing off road parking for at least two cars and a large, mature rear garden with a paved seating area providing the perfect vantage point to watch the birds darting in and out of the apple trees. For a fabulous surprise call 01536 416 555 to view today. EPC RATING: E



15-16 Market Place, Kettering, Northamptonshire, NN16 0AJ

