



**HENDERSON
CONNELLAN**
ESTATE AGENTS

Park Road, Kettering NN16

🛏 4 🚿 2 🛋 2



"Park Life"

This fabulous, Victorian double bay fronted Townhouse occupies a lovely position overlooking Rockingham Pleasure park complete with Victorian Band Stand and green open space. The stunning interior includes an entrance hall has period mosaic flooring, living room with elegant fireplace which flows to the versatile dining room, the designer kitchen/breakfast/family room is a great space with Quartz worksurfaces, select integrated appliances and exposed brick elevation, the perfect social space. There is a utility area, guest cloakroom and conservatory overlooking the rear garden. Upstairs the spacious then continues with stylish bathroom with separate shower enclosure and four generous bedrooms arranged over two floors. Outside there is a walled foregarden and a well kept enclosed rear garden. Schooling, walks, the town centre and a wealth of amenities are within easy reach.

Living Room - 4.09m x 3.56m (13'5" x 11'8")

Dining Room - 4.09m x 3.58m (13'5" x 11'9")

Kitchen/Breakfast Room - 4.93m x 2.79m (16'2" x 9'2")

Utility Room - 1.63m x 1.35m (5'4" x 4'5")

Conservatory - 3.1m x 2.79m (10'2" x 9'2")

Bathroom - 2.64m x 1.91m (8'8" x 6'3")

Bedroom One - 4.88m x 3.66m (16'0" x 12'0")

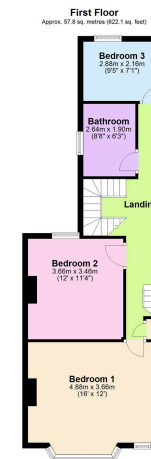
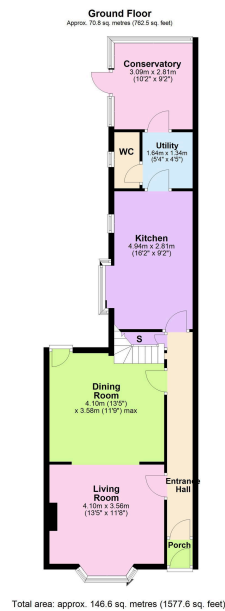
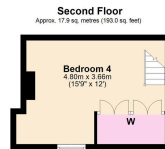
Bedroom Two - 3.66m x 3.45m (12'0" x 11'4")

Bedroom Three - 2.87m x 2.16m (9'5" x 7'1")

Bedroom Four - 4.8m x 3.66m (15'9" x 12'0")



- Park Views
- Victorian Features
- Four bedrooms
- Terraced House
- Gas Central Heating
- Mostly UPVC double glazed windows
- Council Tax Rating: C
- EPC Rating: Pending



Disclaimer: These particulars do not form part of any offer or contract and should not be relied upon as statements or representations of fact. Any areas, measurements of distances are approximate. The text, photographs and plans are for guidance only and are not necessarily comprehensive.

15-16 Market Place, Kettering,
Northamptonshire, NN16 0AJ

